

SS-56 Rabbit pAb

CatalogNo: YT5082

Key Features

Host Species

- Rabbit

Reactivity

- Human, Mouse

Applications

- WB, IHC, IF, ELISA

MW

- 56kD (Observed)

Isotype

- IgG

Recommended Dilution Ratios

WB 1:500-1:2000

IHC: 1:100-300

ELISA 1:40000

IF 1:50-200

Storage

Storage*

-15°C to -25°C/1 year (Do not lower than -25°C)

Formulation

Liquid in PBS containing 50% glycerol, 0.5% BSA and 0.02% sodium azide.

Basic Information

Clonality

Polyclonal

Immunogen Information

Immunogen

Synthesized peptide derived from the Internal region of human SS-56.

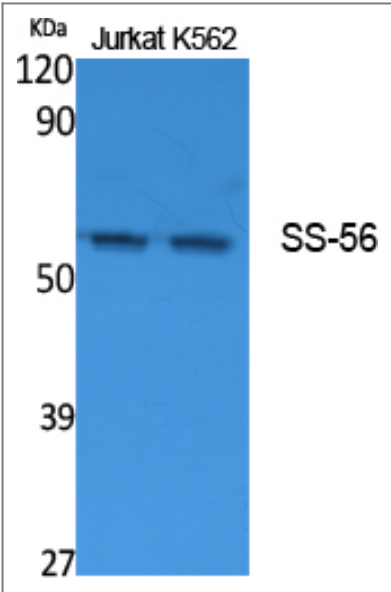
Specificity

SS-56 Polyclonal Antibody detects endogenous levels of SS-56 protein.

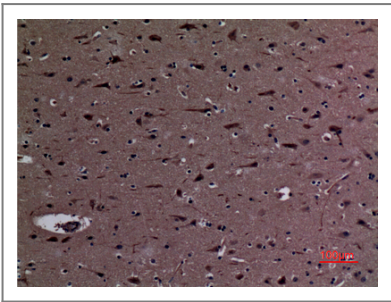
Target Information

Gene name	TRIM68		
Protein Name	E3 ubiquitin-protein ligase TRIM68		
	Organism	Gene ID	UniProt ID
	Human	55128 ;	Q6AZZ1 ;
	Mouse		Q8K243 ;
Cellular Localization	Cytoplasm, perinuclear region. Nucleus. Colocalized with AR in nucleus.		
Tissue specificity	Widely expressed. Expressed at high levels in prostate cancer cell lines. Up-regulation could be restricted to androgen-dependent cells.		
Function	Disease:Target of immune response in patients with systemic lupus erythematosus (SLE), primary Sjogren syndrome or HIV-1 infection.,similarity:Belongs to the TRIM/RBCC family.,similarity:Contains 1 B box-type zinc finger.,similarity:Contains 1 B30.2/SPRY domain.,similarity:Contains 1 RING-type zinc finger.,tissue specificity:Detected in all tissues. High expression is noted in spleen and in fetal liver.,		

Validation Data



Western Blot analysis of extracts from Jurkat, K562 cells, using SS-56 Polyclonal Antibody. Secondary antibody(catalog#:RS0002) was diluted at 1:20000



Immunohistochemical analysis of paraffin-embedded human-brain, antibody was diluted at 1:100

| Contact information

Orders: order@immunoway.com
Support: tech@immunoway.com
Telephone: 877-594-3616 (Toll Free), 408-747-0185
Website: <http://www.immunoway.com>
Address: 2200 Ringwood Ave San Jose, CA 95131 USA



Please scan the QR code
to access additional
product information:
SS-56 Rabbit pAb

For Research Use Only. Not for Use in Diagnostic Procedures.

[Antibody](#) | [ELISA Kits](#) | [Protein](#) | [Reagents](#)