

## PDP2 Rabbit pAb

CatalogNo: YT5074

### Key Features

#### Host Species

- Rabbit

#### Reactivity

- Human,Rat,Mouse,

#### Applications

- WB,ELISA,IHC

#### MW

- 59kD (Observed)

#### Isotype

- IgG

### Recommended Dilution Ratios

**WB 1:500-2000**

**IHC 1:50-300**

**ELISA 1:2000-20000**

### Storage

**Storage\*** -15°C to -25°C/1 year(Do not lower than -25°C)

**Formulation** Liquid in PBS containing 50% glycerol, 0.5% BSA and 0.02% sodium azide.

### Basic Information

**Clonality** Polyclonal

### Immunogen Information

**Immunogen** Synthesized peptide derived from PDP2 . at AA range: 70-150

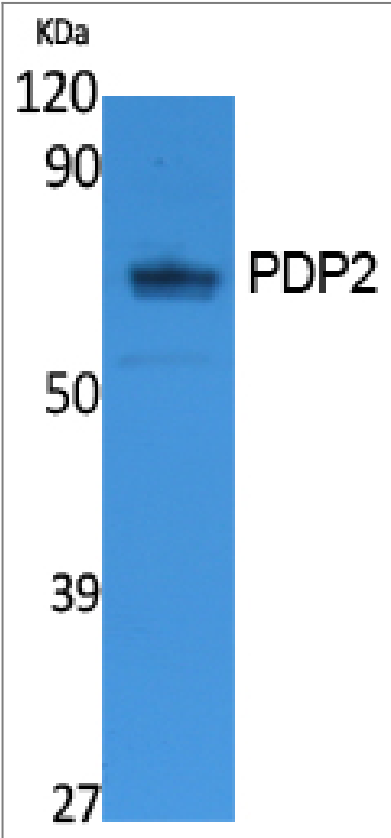
**Specificity** PDP2 Polyclonal Antibody detects endogenous levels of PDP2 protein.

### Target Information

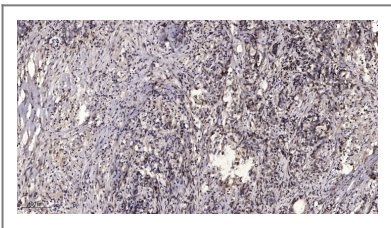
**Gene name** PDP2

Protein Name	[Pyruvate dehydrogenase [acetyl-transferring]]-phosphatase 2 mitochondrial		
	Organism	Gene ID	UniProt ID
	Human	<a href="#">57546</a> ;	<a href="#">Q9P2J9</a> ;
Cellular Localization	Mitochondrion matrix .		
Tissue specificity	Brain,		
Function	Catalytic activity:[Pyruvate dehydrogenase (acetyl-transferring)] phosphate + H(2)O = [pyruvate dehydrogenase (acetyl-transferring)] + phosphate.,cofactor: Binds 2 magnesium ions per subunit.,Function:Catalyzes the dephosphorylation and concomitant reactivation of the alpha subunit of the E1 component of the pyruvate dehydrogenase complex.,similarity: Belongs to the PP2C family.,subunit: Heterodimer of a catalytic subunit and a FAD protein of unknown function.,		

Validation Data



Western Blot analysis of extracts from K562 cells, using PDP2 Polyclonal Antibody. Secondary antibody(catalog#:RS0002) was diluted at 1:20000



Immunohistochemical analysis of paraffin-embedded human Gastric adenocarcinoma. 1, Antibody was diluted at 1:200(4° overnight). 2, Tris-EDTA,pH9.0 was used for antigen retrieval. 3,Secondary antibody was diluted at 1:200(room temperature, 45min).

## | Contact information

Orders: order@immunoway.com  
Support: tech@immunoway.com  
Telephone: 877-594-3616 (Toll Free), 408-747-0185  
Website: <http://www.immunoway.com>  
Address: 2200 Ringwood Ave San Jose, CA 95131 USA



Please scan the QR code  
to access additional  
product information:  
**PDP2 Rabbit pAb**

---

For Research Use Only. Not for Use in Diagnostic Procedures.

[Antibody](#) | [ELISA Kits](#) | [Protein](#) | [Reagents](#)