

NVL Rabbit pAb

CatalogNo: YT5047

Key Features

Host Species

- Rabbit

Reactivity

- Human, Mouse, Rat

Applications

- WB, ELISA

MW

- 95kD (Observed)

Isotype

- IgG

Storage

Storage* -15°C to -25°C/1 year (Do not lower than -25°C)

Formulation Liquid in PBS containing 50% glycerol, 0.5% BSA and 0.02% sodium azide.

Recommended Dilution Ratios

WB 1:500-1:2000

ELISA 1:20000

Not yet tested in other applications.

Basic Information

Clonality Polyclonal

Immunogen Information

Immunogen Synthesized peptide derived from NVL . at AA range: 320-400

Specificity NVL Polyclonal Antibody detects endogenous levels of NVL protein.

Target Information

Gene name NVL

Protein Name Nuclear valosin-containing protein-like

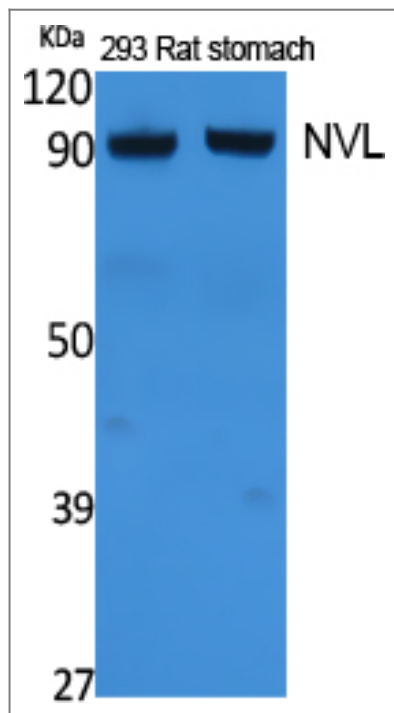
Organism	Gene ID	UniProt ID
Human	4931 ;	O15381 ;
Mouse	67459 ;	Q9DBY8 ;

Cellular Localization [Isoform 2]: Nucleus, nucleoplasm .; [Isoform 1]: Nucleus, nucleolus . Nucleus, nucleoplasm . Expressed predominantly in the nucleolus. Associates with pre-ribosomal particles in the nucleus. .

Tissue specificity Widely expressed. Highest level of expression in heart, placenta, skeletal muscle, pancreas and retina.

Function PTM:Phosphorylated.,similarity:Belongs to the AAA ATPase family.,tissue specificity:Widely expressed. Highest level of expression in heart, placenta, skeletal muscle, pancreas and retina.,

Validation Data



Western Blot analysis of extracts from rat stomach, 293 cells, using NVL Polyclonal Antibody. Secondary antibody (catalog#:RS0002) was diluted at 1:20000 cells nucleus extracted by Minute TM Cytoplasmic and Nuclear Fractionation kit (SC-003, Invent biotech, MN, USA).

Contact information

Orders: order@immunoway.com
Support: tech@immunoway.com
Telephone: 877-594-3616 (Toll Free), 408-747-0185
Website: http://www.immunoway.com
Address: 2200 Ringwood Ave San Jose, CA 95131 USA



Please scan the QR code
to access additional
product information:
NVL Rabbit pAb

For Research Use Only. Not for Use in Diagnostic Procedures.

[Antibody](#) | [ELISA Kits](#) | [Protein](#) | [Reagents](#)