

V-ATPase D1 Rabbit pAb

CatalogNo: YT5026

Key Features

Host Species

- Rabbit

Reactivity

- Human, Mouse, Rat

Applications

- WB, ELISA

MW

- 40kD (Observed)

Isotype

- IgG

Recommended Dilution Ratios

WB 1:500-1:2000

ELISA 1:20000

Not yet tested in other applications.

Storage

Storage*

-15°C to -25°C/1 year (Do not lower than -25°C)

Formulation

Liquid in PBS containing 50% glycerol, 0.5% BSA and 0.02% sodium azide.

Basic Information

Clonality

Polyclonal

Immunogen Information

Immunogen

The antiserum was produced against synthesized peptide derived from human V-ATPase D1. AA range: 221-270

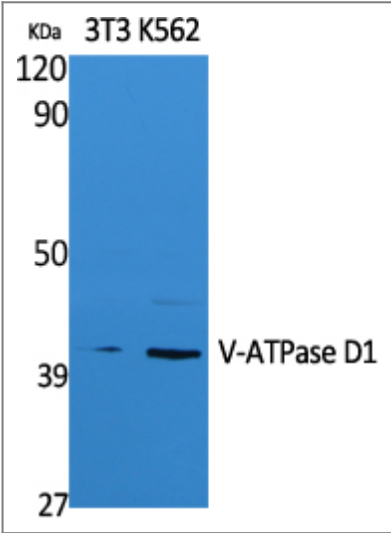
Specificity

V-ATPase D1 Polyclonal Antibody detects endogenous levels of V-ATPase D1 protein.

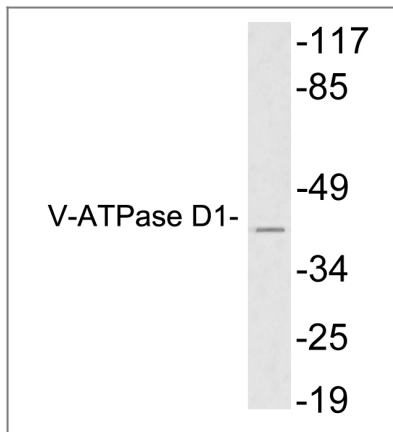
Target Information

Gene name	ATP6V0D1		
Protein Name	V-type proton ATPase subunit d 1		
	Organism	Gene ID	UniProt ID
	Human	9114;	P61421;
	Mouse	11972;	P51863;
Cellular Localization	Membrane ; Peripheral membrane protein ; Cytoplasmic side . Lysosome membrane ; Peripheral membrane protein . Cytoplasmic vesicle, clathrin-coated vesicle membrane ; Peripheral membrane protein . Localizes to centrosome and the base of the cilium. .		
Tissue specificity	Ubiquitous.		
Function	Function:Subunit of the integral membrane V0 complex of vacuolar ATPase. Vacuolar ATPase is responsible for acidifying a variety of intracellular compartments in eukaryotic cells, thus providing most of the energy required for transport processes in the vacuolar system. May play a role in coupling of proton transport and ATP hydrolysis.,similarity:Belongs to the V-ATPase V0D/AC39 subunit family.,subunit:V-ATPase is an heteromultimeric enzyme composed of a peripheral catalytic V1 complex (components A to H) attached to an integral membrane V0 proton pore complex (components: a, c, c', c'' and d).,tissue specificity:Ubiquitous.,		

Validation Data



Western Blot analysis of extracts from NIH-3T3, K562 cells, using V-ATPase D1 Polyclonal Antibody. Secondary antibody(catalog#:RS0002) was diluted at 1:20000



Western blot analysis of lysates from HeLa cells, using V-ATPase D1 antibody.

Contact information

Orders: order@immunoway.com
Support: tech@immunoway.com
Telephone: 877-594-3616 (Toll Free), 408-747-0185
Website: <http://www.immunoway.com>
Address: 2200 Ringwood Ave San Jose, CA 95131 USA



Please scan the QR code
to access additional
product information:
**V-ATPase D1 Rabbit
pAb**

For Research Use Only. Not for Use in Diagnostic Procedures.

[Antibody](#) | [ELISA Kits](#) | [Protein](#) | [Reagents](#)