

ZnT-2 Rabbit pAb

CatalogNo: YT4988

| Key Features

Host Species

- Rabbit

Reactivity

- Human,Rat,Mouse,

Applications

- IHC,IF,ELISA

MW

- 35kD (Calculated)

Isotype

- IgG

| Recommended Dilution Ratios

IHC 1:100-1:300

ELISA 1:5000

IF 1:50-200

| Storage

Storage*

-15°C to -25°C/1 year(Do not lower than -25°C)

Formulation

Liquid in PBS containing 50% glycerol, 0.5% BSA and 0.02% sodium azide.

| Basic Information

Clonality

Polyclonal

| Immunogen Information

Immunogen

The antiserum was produced against synthesized peptide derived from human SLC30A2. AA range:150-200

Specificity

ZnT-2 Polyclonal Antibody detects endogenous levels of ZnT-2 protein.

| Target Information

Gene name SLC30A2

Protein Name Zinc transporter 2

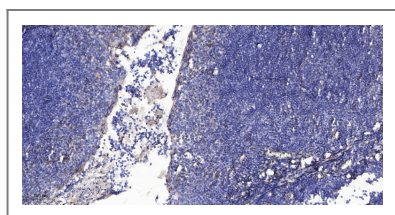
Organism	Gene ID	UniProt ID
Human	7780 ;	Q9BRI3 ;
Mouse		Q2HJ10 ;

Cellular Localization Vacuole membrane ; Multi-pass membrane protein .; [Isoform 2]: Lysosome membrane.

Tissue specificity Ovary,Uterus,

Function transition metal ion transport, ion transport, cation transport, zinc ion transport, metal ion transport, transmembrane transport,

| Validation Data



Immunohistochemical analysis of paraffin-embedded human tonsil. 1, Antibody was diluted at 1:200(4° overnight). 2, Tris-EDTA,pH9.0 was used for antigen retrieval. 3,Secondary antibody was diluted at 1:200(room temperature, 30min).

| Contact information

Orders: order@immunoway.com
Support: tech@immunoway.com
Telephone: 877-594-3616 (Toll Free), 408-747-0185
Website: <http://www.immunoway.com>
Address: 2200 Ringwood Ave San Jose, CA 95131 USA



Please scan the QR code to access additional product information:
ZnT-2 Rabbit pAb

For Research Use Only. Not for Use in Diagnostic Procedures.

[Antibody](#) | [ELISA Kits](#) | [Protein](#) | [Reagents](#)