

ZNRF2 Rabbit pAb

CatalogNo: YT4986

Key Features

Host Species

- Rabbit

Reactivity

- Human, Mouse

Applications

- IHC, IF, ELISA

MW

- 24kD (Calculated)

Isotype

- IgG

Recommended Dilution Ratios

IHC 1:100-1:300

IF 1:200-1:1000

ELISA 1:20000

Not yet tested in other applications.

Storage

Storage*

-15°C to -25°C/1 year (Do not lower than -25°C)

Formulation

Liquid in PBS containing 50% glycerol, 0.5% BSA and 0.02% sodium azide.

Basic Information

Clonality

Polyclonal

Immunogen Information

Immunogen

The antiserum was produced against synthesized peptide derived from human ZNRF2. AA range: 161-210

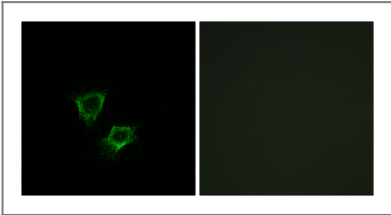
Specificity

ZNRF2 Polyclonal Antibody detects endogenous levels of ZNRF2 protein.

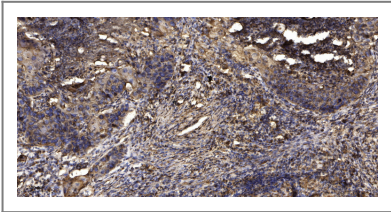
Target Information

Gene name	ZNRF2		
Protein Name	E3 ubiquitin-protein ligase ZNRF2		
	Organism	Gene ID	UniProt ID
	Human	223082 ;	Q8NHG8 ;
	Mouse	387524 ;	Q71FD5 ;
Cellular Localization	Endosome membrane ; Peripheral membrane protein . Lysosome membrane ; Peripheral membrane protein . Cell junction, synapse, presynaptic cell membrane ; Peripheral membrane protein .		
Tissue specificity	Highly expressed in the brain, with higher expression during development than in adult. Expressed also in mammary glands, testis, colon and kidney.		
Function	Domain:The RING-type zinc finger domain is required for E3 ligase activity.,Function:May play a role in the establishment and maintenance of neuronal transmission and plasticity via its ubiquitin ligase activity. E3 ubiquitin ligases accept ubiquitin from an E2 ubiquitin-conjugating enzyme in the form of a thioester and then directly transfer the ubiquitin to targeted substrates.,pathway:Protein modification; protein ubiquitination.,PTM:Phosphorylated upon DNA damage, probably by ATM or ATR.,similarity:Contains 1 RING-type zinc finger.,subcellular location:Present in presynaptic plasma membranes in neurons.,subunit:Interacts with UBE2N.,tissue specificity:Highly expressed in the brain, with higher expression during development than in adult. Expressed also in mammary glands, testis, colon and kidney.,		

| Validation Data



Immunofluorescence analysis of A549 cells, using ZNRF2 Antibody. The picture on the right is blocked with the synthesized peptide.



Immunohistochemical analysis of paraffin-embedded human Squamous cell carcinoma of lung. 1, Antibody was diluted at 1:200(4° overnight). 2, Tris-EDTA,pH9.0 was used for antigen retrieval. 3,Secondary antibody was diluted at 1:200(room temperature, 45min).

| Contact information

Orders: order@immunoway.com
Support: tech@immunoway.com
Telephone: 877-594-3616 (Toll Free), 408-747-0185
Website: http://www.immunoway.com
Address: 2200 Ringwood Ave San Jose, CA 95131 USA



Please scan the QR code
to access additional
product information:
ZNRF2 Rabbit pAb

For Research Use Only. Not for Use in Diagnostic Procedures.

[Antibody](#) | [ELISA Kits](#) | [Protein](#) | [Reagents](#)