

## ZNF76 Rabbit pAb

CatalogNo: YT4982

Orthogonal Validated 

### Key Features

**Host Species**

- Rabbit

**Reactivity**

- Human,Rat,Mouse,

**Applications**

- IHC,IF,ELISA

**MW**

- 62kD (Calculated)

**Isotype**

- IgG

### Recommended Dilution Ratios

**IHC 1:100-1:300****ELISA 1:10000****IF 1:50-200**

### Storage

**Storage\***

-15°C to -25°C/1 year(Do not lower than -25°C)

**Formulation**

Liquid in PBS containing 50% glycerol, 0.5% BSA and 0.02% sodium azide.

### Basic Information

**Clonality**

Polyclonal

### Immunogen Information

**Immunogen**

The antiserum was produced against synthesized peptide derived from human ZNF76. AA range:116-165

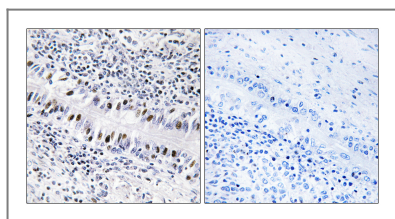
**Specificity**

ZNF76 Polyclonal Antibody detects endogenous levels of ZNF76 protein.

### Target Information

<b>Gene name</b>	ZNF76		
<b>Protein Name</b>	Zinc finger protein 76		
	<b>Organism</b>	<b>Gene ID</b>	<b>UniProt ID</b>
	Human	<a href="#">7629</a> ;	<a href="#">P36508</a> ;
	Mouse		<a href="#">Q8BMU0</a> ;
<b>Cellular Localization</b>	Nucleus .		
<b>Tissue specificity</b>	Testis.		
<b>Function</b>	Function:May be involved in transcriptional regulation.,similarity:Belongs to the krueppel C2H2-type zinc-finger protein family.,similarity:Contains 7 C2H2-type zinc fingers.,tissue specificity:Testis.,		

## Validation Data



Immunohistochemistry analysis of paraffin-embedded human lung carcinoma, using ZNF76 Antibody. The picture on the right is blocked with the synthesized peptide.

## Contact information

Orders: [order@immunoway.com](mailto:order@immunoway.com)  
 Support: [tech@immunoway.com](mailto:tech@immunoway.com)  
 Telephone: 877-594-3616 (Toll Free), 408-747-0185  
 Website: <http://www.immunoway.com>  
 Address: 2200 Ringwood Ave San Jose, CA 95131 USA



Please scan the QR code to access additional product information:  
**ZNF76 Rabbit pAb**

For Research Use Only. Not for Use in Diagnostic Procedures.

[Antibody](#) | [ELISA Kits](#) | [Protein](#) | [Reagents](#)