

ZNF262 Rabbit pAb

CatalogNo: YT4959

Key Features

Host Species

- Rabbit

Reactivity

- Human, Mouse

Applications

- WB, IHC, IF, ELISA

MW

- 175kD (Observed)

Isotype

- IgG

Storage

Storage* -15°C to -25°C/1 year (Do not lower than -25°C)**Formulation** Liquid in PBS containing 50% glycerol, 0.5% BSA and 0.02% sodium azide.

Recommended Dilution Ratios

WB 1:500-1:2000**IHC 1:100-1:300****ELISA 1:10000****IF 1:50-200**

Basic Information

Clonality Polyclonal

Immunogen Information

Immunogen The antiserum was produced against synthesized peptide derived from human ZMYM4. AA range: 801-850**Specificity** ZNF262 Polyclonal Antibody detects endogenous levels of ZNF262 protein.

Target Information

Gene name ZMYM4

Protein Name Zinc finger MYM-type protein 4

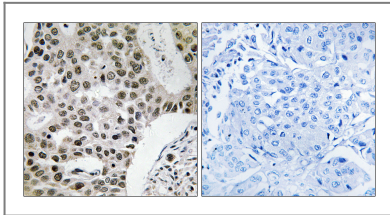
Organism	Gene ID	UniProt ID
Human	9202;	Q5VZL5;
Mouse	67785;	A2A791;

Cellular Localization nucleoplasm,cytoplasm,

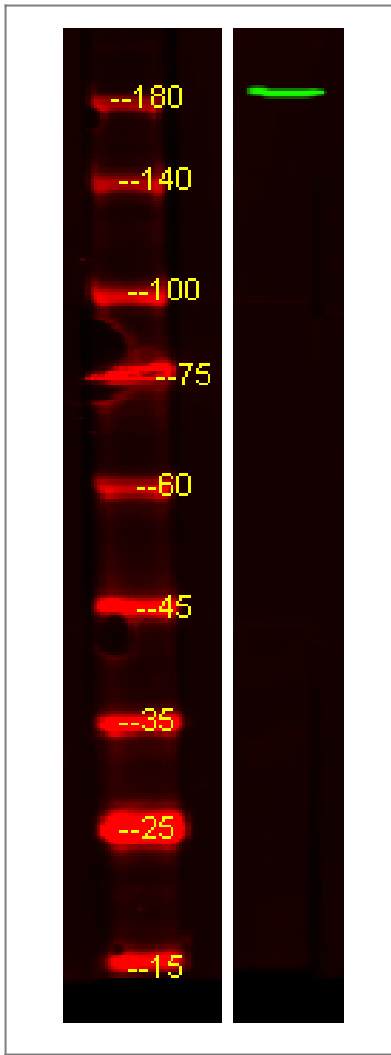
Tissue specificity Expressed at higher level in heart, skeletal muscle, kidney and liver.

Function miscellaneous:The 3'-UTR region of the mRNA encoding this protein contains a motif called CDIR (for cell death inhibiting RNA) that binds HNRPD/AUF1 and HSPB1/HSP27. It is able to inhibit interferon-gamma induced apoptosis.,PTM:Phosphorylated upon DNA damage, probably by ATM or ATR.,similarity:Contains 9 MYM-type zinc fingers.,tissue specificity:Expressed at higher level in heart, skeletal muscle, kidney and liver.,

Validation Data



Immunohistochemistry analysis of paraffin-embedded human breast carcinoma tissue, using ZMYM4 Antibody. The picture on the right is blocked with the synthesized peptide.



Western Blot analysis of HEK293 lysis, using primary antibody at 1:1000 dilution. Secondary antibody(catalog#:RS23920) was diluted at 1:10000

Contact information

Orders: order@immunoway.com
Support: tech@immunoway.com
Telephone: 877-594-3616 (Toll Free), 408-747-0185
Website: <http://www.immunoway.com>
Address: 2200 Ringwood Ave San Jose, CA 95131 USA



Please scan the QR code to access additional product information:
ZNF262 Rabbit pAb

For Research Use Only. Not for Use in Diagnostic Procedures.

[Antibody](#) | [ELISA Kits](#) | [Protein](#) | [Reagents](#)