

ZIP2 Rabbit pAb

CatalogNo: YT4948

| Key Features

Host Species

- Rabbit

Reactivity

- Human, Mouse

Applications

- WB, ELISA

MW

- 36kD (Observed)

Isotype

- IgG

| Recommended Dilution Ratios

WB 1:500-1:2000

ELISA 1:10000

Not yet tested in other applications.

| Storage

Storage* -15°C to -25°C/1 year (Do not lower than -25°C)

Formulation Liquid in PBS containing 50% glycerol, 0.5% BSA and 0.02% sodium azide.

| Basic Information

Clonality Polyclonal

| Immunogen Information

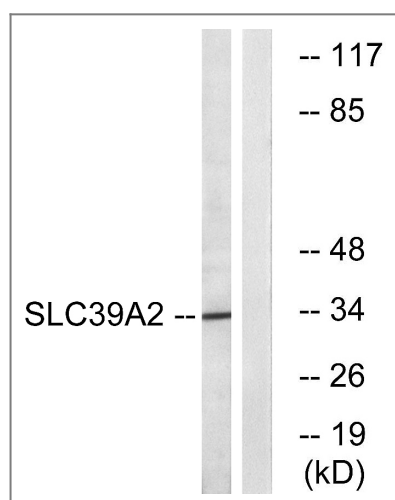
Immunogen The antiserum was produced against synthesized peptide derived from human SLC39A2. AA range: 11-60

Specificity ZIP2 Polyclonal Antibody detects endogenous levels of ZIP2 protein.

| Target Information

Gene name	SLC39A2		
Protein Name	Zinc transporter ZIP2		
	Organism	Gene ID	UniProt ID
	Human	29986 ;	Q9NP94 ;
Cellular Localization	Cell membrane; Multi-pass membrane protein.		
Tissue specificity	Expressed only in prostate and uterine epithelial cells.		
Function	Function:Mediates zinc uptake. Zinc uptake may be mediated by a Zn(2+)-HCO(3)(-) symport mechanism and can function in the presence of albumin. May also transport other divalent cations. May be important in contact inhibition of normal epithelial cells and loss of its expression may play a role in tumorigenesis.,induction:Shows a dramatic induction in normal epithelial cells contact inhibition.,miscellaneous:Zinc uptake is inhibited at pH levels below 7.0 and is stimulated at higher pH and is significantly inhibited by Cu(2+), Co(2+) and Mn(2+) ions. Not inhibited by Fe(2+).,similarity:Belongs to the ZIP transporter (TC 2.A.5) family.,tissue specificity:Expressed only in prostate and uterine epithelial cells.,		

Validation Data



Western blot analysis of lysates from Jurkat cells, using SLC39A2 Antibody. The lane on the right is blocked with the synthesized peptide.

Contact information

Orders: order@immunoway.com
 Support: tech@immunoway.com
 Telephone: 877-594-3616 (Toll Free), 408-747-0185
 Website: <http://www.immunoway.com>
 Address: 2200 Ringwood Ave San Jose, CA 95131 USA



Please scan the QR code to access additional product information:
ZIP2 Rabbit pAb

