

XRCC2 Rabbit pAb

CatalogNo: YT4918

Key Features

Host Species

- Rabbit

Reactivity

- Human, Mouse

Applications

- WB, IHC, IF, ELISA

MW

- 32kD (Observed)

Isotype

- IgG

Recommended Dilution Ratios

WB 1:500-1:2000

IHC 1:100-1:300

ELISA 1:10000

IF 1:50-200

Storage

Storage*

-15°C to -25°C/1 year (Do not lower than -25°C)

Formulation

Liquid in PBS containing 50% glycerol, 0.5% BSA and 0.02% sodium azide.

Basic Information

Clonality

Polyclonal

Immunogen Information

Immunogen

The antiserum was produced against synthesized peptide derived from human XRCC2. AA range: 211-260

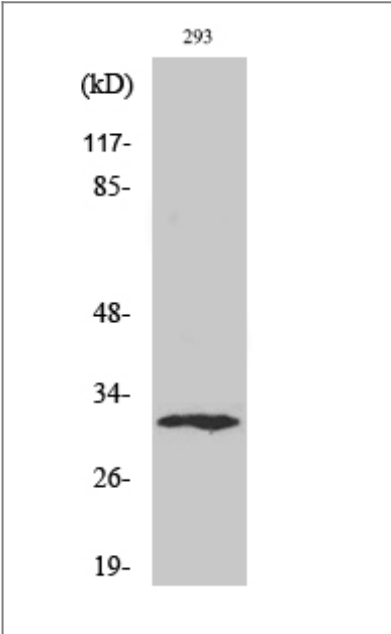
Specificity

XRCC2 Polyclonal Antibody detects endogenous levels of XRCC2 protein.

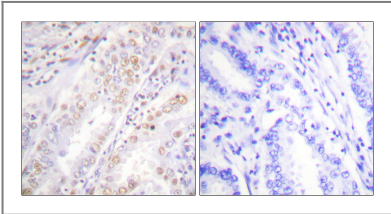
Target Information

Gene name	XRCC2		
Protein Name	DNA repair protein XRCC2		
	Organism	Gene ID	UniProt ID
	Human	7516;	O43543;
	Mouse		Q9CX47;
Cellular Localization	Nucleus . Cytoplasm, cytoskeleton, microtubule organizing center, centrosome .		
Tissue specificity	Brain,Cervix carcinoma,Testis,		
Function	Function:Involved in the homologous recombination repair (HRR) pathway of double-stranded DNA, thought to repair chromosomal fragmentation, translocations and deletions. The BCDX2 complex binds single-stranded DNA, single-stranded gaps in duplex DNA and specifically to nicks in duplex DNA.,PTM:Phosphorylated upon DNA damage, probably by ATM or ATR.,similarity:Belongs to the recA family. RAD51 subfamily.,subunit:Interacts with RAD51D. Part of a BCDX2 complex consisting of RAD51B, RAD51C, RAD51D and XRCC2. Part of a complex consisting of RAD51B, RAD51C, RAD51D, XRCC2 and XRCC3. In the absence of DNA, XRCC2-RAD51D formed a multimeric ring structure. In the presence of single-stranded DNA, XRCC2-RAD51D formed a filamentous structure.,		

| Validation Data



Western Blot analysis of various cells using XRCC2 Polyclonal Antibody diluted at 1:2000. Secondary antibody(catalog#:RS0002) was diluted at 1:20000 cells nucleus extracted by Minute TM Cytoplasmic and Nuclear Fractionation kit (SC-003,Inventbiotech,MN,USA).



Immunohistochemistry analysis of paraffin-embedded human lung carcinoma, using XRCC2 Antibody. The picture on the right is blocked with the synthesized peptide.

| Contact information

Orders: order@immunoway.com
Support: tech@immunoway.com
Telephone: 877-594-3616 (Toll Free), 408-747-0185
Website: <http://www.immunoway.com>
Address: 2200 Ringwood Ave San Jose, CA 95131 USA



Please scan the QR code
to access additional
product information:
XRCC2 Rabbit pAb

For Research Use Only. Not for Use in Diagnostic Procedures.

[Antibody](#) | [ELISA Kits](#) | [Protein](#) | [Reagents](#)