

X11 β Rabbit pAb

CatalogNo: YT4910

Key Features

Host Species

- Rabbit

Reactivity

- Human, Mouse, Rat

Applications

- IHC, IF, WB, ELISA

MW

- 83kD (Observed)

Isotype

- IgG

Recommended Dilution Ratios

WB 1:500-2000**IHC 1:100-1:300****ELISA 1:20000****IF 1:50-200**

Storage

Storage*

-15°C to -25°C/1 year(Do not lower than -25°C)

Formulation

Liquid in PBS containing 50% glycerol, 0.5% BSA and 0.02% sodium azide.

Basic Information

Clonality

Polyclonal

Immunogen Information

Immunogen

The antiserum was produced against synthesized peptide derived from human APBA2. AA range:371-420

SpecificityX11 β Polyclonal Antibody detects endogenous levels of X11 β protein.

Target Information

Gene name APBA2

Protein Name Amyloid beta A4 precursor protein-binding family A member 2

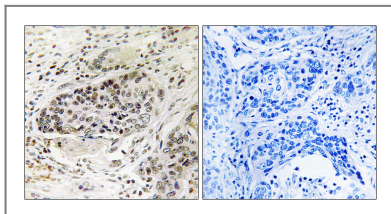
Organism	Gene ID	UniProt ID
Human	321;	Q99767;
Mouse	11784;	P98084;
Rat	83610;	O35431;

Cellular Localization plasma membrane,synaptic vesicle,

Tissue specificity Brain.

Function Domain:Composed of an N-terminal domain that binds STXBP1, a middle phosphotyrosine-binding domain (PID/PTB) that mediates binding with the cytoplasmic domain of the beta-amyloid precursor protein, and two C-terminal PDZ domains thought to attach proteins to the plasma membrane.,Function:Putative function in synaptic vesicle exocytosis by binding to STXBP1, an essential component of the synaptic vesicle exocytotic machinery. May modulate processing of the beta-amyloid precursor protein (APP) and hence formation of beta-APP.,similarity:Contains 1 PID domain.,similarity:Contains 2 PDZ (DHR) domains.,subunit:Part of a multimeric complex containing STXBP1 and syntaxin-1. Binds to the cytoplasmic domain of amyloid protein beta, and to the nuclear factor NF-kappa-B/p65 via its PDZ domain. Interacts with the amino-terminal domain of APBA2BP.,tissue specificity:Brain.,

Validation Data



Immunohistochemistry analysis of paraffin-embedded human lung carcinoma tissue, using APBA2 Antibody. The picture on the right is blocked with the synthesized peptide.

Contact information

Orders: order@immunoway.com
Support: tech@immunoway.com
Telephone: 877-594-3616 (Toll Free), 408-747-0185
Website: <http://www.immunoway.com>
Address: 2200 Ringwood Ave San Jose, CA 95131 USA



Please scan the QR code to access additional product information:
X11β Rabbit pAb

