

WTAP Rabbit pAb

CatalogNo: YT4908

| Key Features

Host Species

- Rabbit

Reactivity

- Human, Mouse

Applications

- WB, IHC, IF, ELISA

MW

- 55kD (Observed)

Isotype

- IgG

| Recommended Dilution Ratios

WB 1:500-1:2000

IHC 1:100-1:300

ELISA 1:20000

IF 1:50-200

| Storage

Storage* -15°C to -25°C/1 year (Do not lower than -25°C)

Formulation Liquid in PBS containing 50% glycerol, 0.5% BSA and 0.02% sodium azide.

| Basic Information

Clonality Polyclonal

| Immunogen Information

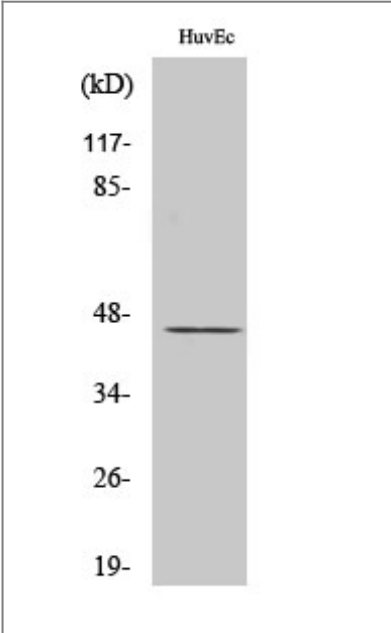
Immunogen The antiserum was produced against synthesized peptide derived from human WTAP. AA range: 321-370

Specificity WTAP Polyclonal Antibody detects endogenous levels of WTAP protein.

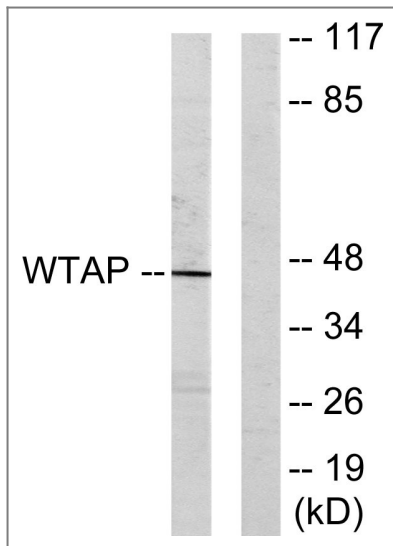
| Target Information

Gene name	WTAP		
Protein Name	Pre-mRNA-splicing regulator WTAP		
	Organism	Gene ID	UniProt ID
	Human	9589;	Q15007;
	Mouse	60532;	Q9ER69;
Cellular Localization	Nucleus speckle . Nucleus, nucleoplasm . Cytoplasm . Mainly nuclear with some fraction located in the cytoplasm. ZC3H13 is required to anchor component of the MACOM subcomplex, such as VIRMA, in the nucleus. .		
Tissue specificity	Ubiquitously expressed.		
Function	Function:Regulates G2/M cell-cycle transition by binding to the 3' UTR of CCNA2, which enhances its stability. Impairs WT1 DNA-binding ability and inhibits expression of WT1 target genes. May be involved in mRNA splicing regulation.,induction:In smooth muscle cells, up-regulated after serum withdrawal, when cells become mature and non proliferative.,PTM:Phosphorylated upon DNA damage, probably by ATM or ATR.,similarity:Belongs to the fl(2)d family.,subunit:Interacts with WT1.,tissue specificity:Ubiquitously expressed.,		

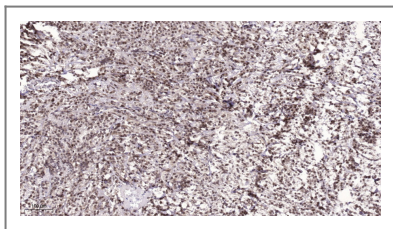
| Validation Data



Western Blot analysis of various cells using WTAP Polyclonal Antibody diluted at 1:500. Secondary antibody(catalog#:RS0002) was diluted at 1:20000 cells nucleus extracted by Minute TM Cytoplasmic and Nuclear Fractionation kit (SC-003,Inventbiotech,MN,USA).



Western blot analysis of lysates from HUVEC cells, using WTAP Antibody. The lane on the right is blocked with the synthesized peptide.



Immunohistochemical analysis of paraffin-embedded human Colon cancer. 1, Antibody was diluted at 1:200(4° overnight). 2, Tris-EDTA,pH9.0 was used for antigen retrieval. 3,Secondary antibody was diluted at 1:200(room temperature, 45min).

Contact information

Orders: order@immunoway.com
 Support: tech@immunoway.com
 Telephone: 877-594-3616 (Toll Free), 408-747-0185
 Website: <http://www.immunoway.com>
 Address: 2200 Ringwood Ave San Jose, CA 95131 USA



Please scan the QR code to access additional product information:
WTAP Rabbit pAb

For Research Use Only. Not for Use in Diagnostic Procedures.

[Antibody](#) | [ELISA Kits](#) | [Protein](#) | [Reagents](#)