

Wnt-1 Rabbit pAb

CatalogNo: YT4907

Orthogonal Validated 

Key Features

Host Species

- Rabbit

Reactivity

- Human, Mouse

Applications

- WB, IHC, IF, ELISA

MW

- 45kD (Observed)

Isotype

- IgG

Recommended Dilution Ratios

WB 1:500-1:2000**IHC 1:100-1:300****IF 1:200-1:1000****ELISA 1:10000****Not yet tested in other applications.**

Storage

Storage*

-15°C to -25°C/1 year (Do not lower than -25°C)

Formulation

Liquid in PBS containing 50% glycerol, 0.5% BSA and 0.02% sodium azide.

Basic Information

Clonality

Polyclonal

Immunogen Information

Immunogen

The antiserum was produced against synthesized peptide derived from human WNT1. AA range: 301-350

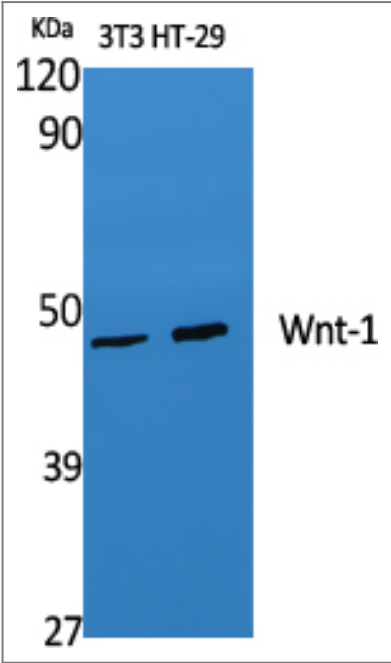
Specificity

Wnt-1 Polyclonal Antibody detects endogenous levels of Wnt-1 protein.

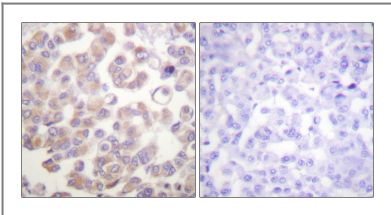
Target Information

| | | | |
|-----------------------|--|-------------------------|--------------------------|
| Gene name | WNT1 | | |
| Protein Name | Proto-oncogene Wnt-1 | | |
| | Organism | Gene ID | UniProt ID |
| | Human | 7471 ; | P04628 ; |
| | Mouse | 22408 ; | P04426 ; |
| Cellular Localization | Secreted, extracellular space, extracellular matrix . Secreted . | | |
| Tissue specificity | Testis, | | |
| Function | Function:Ligand for members of the frizzled family of seven transmembrane receptors. Probable developmental protein. May be a signaling molecule important in CNS development. Is likely to signal over only few cell diameters.,similarity:Belongs to the Wnt family.,subunit:Interacts with PORCN. Interacts with RSPO1, RSPO2 and RSPO3., | | |

Validation Data



Western Blot analysis of various cells using Wnt-1 Polyclonal Antibody diluted at 1:1000. Secondary antibody(catalog#:RS0002) was diluted at 1:20000



Immunohistochemistry analysis of paraffin-embedded human breast carcinoma tissue, using WNT1 Antibody. The picture on the right is blocked with the synthesized peptide.

| Contact information

Orders: order@immunoway.com
Support: tech@immunoway.com
Telephone: 877-594-3616 (Toll Free), 408-747-0185
Website: <http://www.immunoway.com>
Address: 2200 Ringwood Ave San Jose, CA 95131 USA



Please scan the QR code
to access additional
product information:
Wnt-1 Rabbit pAb

For Research Use Only. Not for Use in Diagnostic Procedures.

[Antibody](#) | [ELISA Kits](#) | [Protein](#) | [Reagents](#)