

v-SNARE Vti1a Rabbit pAb

CatalogNo: YT4894

| Key Features

Host Species

- Rabbit

Reactivity

- Human, Mouse, Rat

Applications

- WB, ELISA

MW

- 23kD (Observed)

Isotype

- IgG

| Recommended Dilution Ratios

WB 1:500-1:2000

ELISA 1:10000

Not yet tested in other applications.

| Storage

Storage*

-15°C to -25°C/1 year (Do not lower than -25°C)

Formulation

Liquid in PBS containing 50% glycerol, 0.5% BSA and 0.02% sodium azide.

| Basic Information

Clonality

Polyclonal

| Immunogen Information

Immunogen

The antiserum was produced against synthesized peptide derived from human VT11A. AA range:31-80

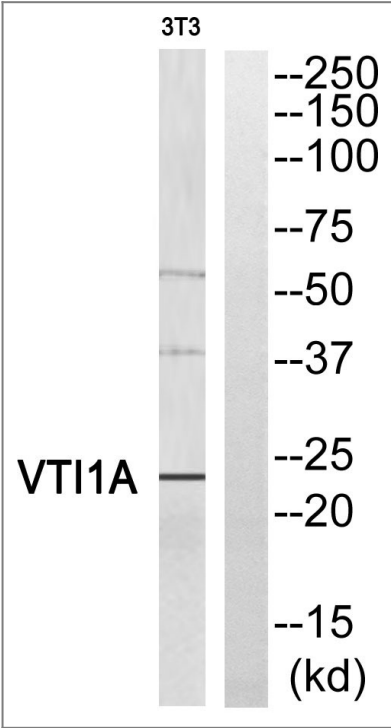
Specificity

v-SNARE Vti1a Polyclonal Antibody detects endogenous levels of v-SNARE Vti1a protein.

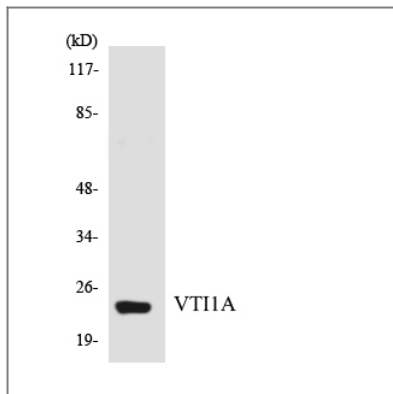
| Target Information

Gene name	VTI1A		
Protein Name	Vesicle transport through interaction with t-SNAREs homolog 1A		
	Organism	Gene ID	UniProt ID
	Human	143187 ;	Q96AJ9 ;
	Mouse	53611 ;	O89116 ;
	Rat	65277 ;	Q9JL51 ;
Cellular Localization	Cytoplasmic vesicle . Golgi apparatus membrane ; Single-pass type IV membrane protein .		
Tissue specificity	Lung,		
Function	Function:V-SNARE that mediates vesicle transport pathways through interactions with t-SNAREs on the target membrane. These interactions are proposed to mediate aspects of the specificity of vesicle trafficking and to promote fusion of the lipid bilayers. May be concerned with increased secretion of cytokines associated with cellular senescence.,similarity:Belongs to the VTI1 family.,		

| Validation Data



Western blot analysis of VTI1A Antibody. The lane on the right is blocked with the VTI1A peptide.



Western blot analysis of the lysates from HUVEC cells using VTI1A antibody.

Contact information

Orders: order@immunoway.com
Support: tech@immunoway.com
Telephone: 877-594-3616 (Toll Free), 408-747-0185
Website: <http://www.immunoway.com>
Address: 2200 Ringwood Ave San Jose, CA 95131 USA



Please scan the QR code to access additional product information:

v-SNARE Vti1a
Rabbit pAb

For Research Use Only. Not for Use in Diagnostic Procedures.

[Antibody](#) | [ELISA Kits](#) | [Protein](#) | [Reagents](#)