

## VEGI Rabbit pAb

CatalogNo: YT4873

### | Key Features

#### Host Species

- Rabbit

#### Reactivity

- Human, Mouse, Rat

#### Applications

- WB, IF, ELISA

#### MW

- 20kD (Observed)

#### Isotype

- IgG

### | Recommended Dilution Ratios

**WB 1:500-1:2000**

**IF 1:200-1:1000**

**ELISA 1:20000**

**Not yet tested in other applications.**

### | Storage

#### Storage\*

-15°C to -25°C/1 year (Do not lower than -25°C)

#### Formulation

Liquid in PBS containing 50% glycerol, 0.5% BSA and 0.02% sodium azide.

### | Basic Information

#### Clonality

Polyclonal

### | Immunogen Information

#### Immunogen

The antiserum was produced against synthesized peptide derived from human TNFSF15.  
AA range: 181-230

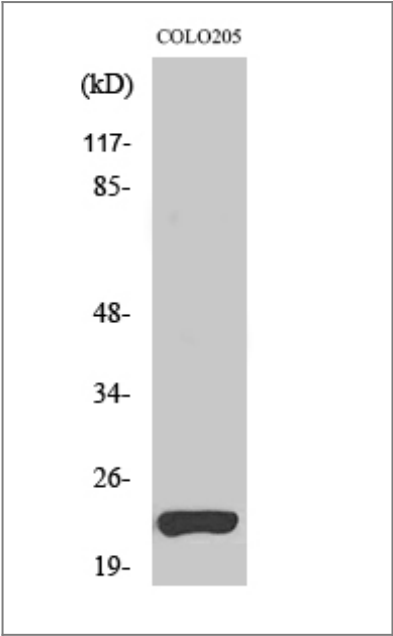
#### Specificity

VEGI Polyclonal Antibody detects endogenous levels of VEGI protein.

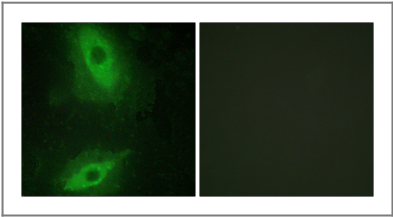
### | Target Information

Gene name	TNFSF15		
Protein Name	Tumor necrosis factor ligand superfamily member 15		
	Organism	Gene ID	UniProt ID
	Human	<a href="#">9966</a> ;	<a href="#">O95150</a> ;
	Mouse		<a href="#">Q5UBV8</a> ;
Cellular Localization	Membrane ; Single-pass type II membrane protein .; [Tumor necrosis factor ligand superfamily member 15, secreted form]: Secreted.		
Tissue specificity	Specifically expressed in endothelial cells. Detected in monocytes, placenta, lung, liver, kidney, skeletal muscle, pancreas, spleen, prostate, small intestine and colon.		
Function	Function:Receptor for TNFRSF25 and TNFRSF6B. Mediates activation of NF-kappa-B. Inhibits vascular endothelial growth and angiogenesis (in vitro). Promotes activation of caspases and apoptosis.,induction:Up-regulated by IL-1-alpha and TNF-alpha.,similarity:Belongs to the tumor necrosis factor family.,subunit:Homotrimer.,tissue specificity:Specifically expressed in endothelial cells. Detected in monocytes, placenta, lung, liver, kidney, skeletal muscle, pancreas, spleen, prostate, small intestine and colon.,		

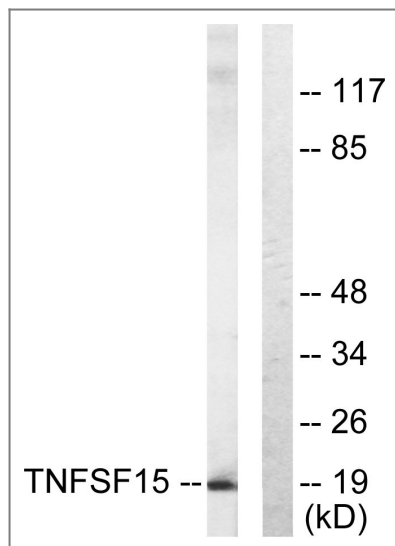
Validation Data



Western Blot analysis of various cells using VEGI Polyclonal Antibody. Secondary antibody(catalog#:RS0002) was diluted at 1:20000



Immunofluorescence analysis of HeLa cells, using TNFSF15 Antibody. The picture on the right is blocked with the synthesized peptide.



Western blot analysis of lysates from COLO205 cells, using TNFSF15 Antibody. The lane on the right is blocked with the synthesized peptide.

## Contact information

Orders: [order@immunoway.com](mailto:order@immunoway.com)  
 Support: [tech@immunoway.com](mailto:tech@immunoway.com)  
 Telephone: 877-594-3616 (Toll Free), 408-747-0185  
 Website: <http://www.immunoway.com>  
 Address: 2200 Ringwood Ave San Jose, CA 95131 USA



Please scan the QR code to access additional product information:  
**VEGI Rabbit pAb**

For Research Use Only. Not for Use in Diagnostic Procedures.

[Antibody](#) | [ELISA Kits](#) | [Protein](#) | [Reagents](#)