

## VAV1 Rabbit pAb

CatalogNo: YT4862

### Key Features

#### Host Species

- Rabbit

#### Reactivity

- Human, Mouse, Rat

#### Applications

- WB, IHC, IF, ELISA

#### MW

- 100kD (Observed)

#### Isotype

- IgG

### Storage

**Storage\*** -15°C to -25°C/1 year (Do not lower than -25°C)

**Formulation** Liquid in PBS containing 50% glycerol, 0.5% BSA and 0.02% sodium azide.

### Recommended Dilution Ratios

**WB 1:500-1:2000**

**IHC 1:100-1:300**

**ELISA 1:5000**

**IF 1:50-200**

### Basic Information

**Clonality** Polyclonal

### Immunogen Information

**Immunogen** Synthesized peptide derived from Vav . at AA range: 110-190

**Specificity** Vav Polyclonal Antibody detects endogenous levels of Vav protein.

### Target Information

**Gene name** VAV1

**Protein Name** Proto-oncogene vav

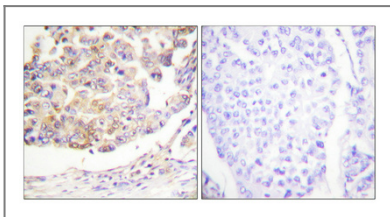
Organism	Gene ID	UniProt ID
Human	<a href="#">7409;</a>	<a href="#">P15498;</a>
Mouse	<a href="#">22324;</a>	<a href="#">P27870;</a>
Rat		<a href="#">P54100;</a>

**Cellular Localization** intracellular,cytosol,plasma membrane,cell-cell junction,

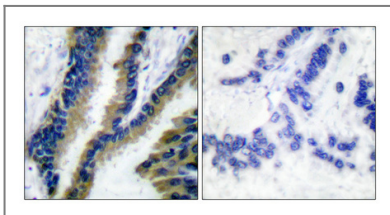
**Tissue specificity** Widely expressed in hematopoietic cells but not in other cell types.

**Function** Domain:The DH domain is involved in interaction with CCPG1.,Function:Couples tyrosine kinase signals with the activation of the Rho/Rac GTPases, thus leading to cell differentiation and/or proliferation.,miscellaneous:'Vav' stands for the sixth letter of the Hebrew alphabet.,PTM:Phosphorylated on tyrosine residues.,similarity:Contains 1 CH (calponin-homology) domain.,similarity:Contains 1 DH (DBL-homology) domain.,similarity:Contains 1 PH domain.,similarity:Contains 1 phorbol-ester/DAG-type zinc finger.,similarity:Contains 1 SH2 domain.,similarity:Contains 2 SH3 domains.,subunit:May interact with CCPG1 (By similarity). Interacts with APS, DOCK2, GRB2, GRB3, DOCK2, SLA and ZNF655/VIK. Interacts with SIAH2; without leading to its degradation. Associates with BLNK, PLCG1, GRB2 and NCK1 in a B-cell antigen receptor-dependent fashion. Interacts with CBLB; which inhibits tyrosine phosphorylation and down-regulates activity. Interacts with SHB and CLNK.,tissue specificity:Widely expressed in hematopoietic cells but not in other cell types.,

## Validation Data



Immunohistochemical analysis of paraffin-embedded Human breast cancer. Antibody was diluted at 1:100 (4°C overnight). High-pressure and temperature Tris-EDTA,pH8.0 was used for antigen retrieval. Negative control (right) obtained from antibody was pre-absorbed by immunogen peptide.



Immunohistochemical analysis of paraffin-embedded Human lung cancer. Antibody was diluted at 1:100 (4°C overnight). High-pressure and temperature Tris-EDTA,pH8.0 was used for antigen retrieval. Negative control (right) obtained from antibody was pre-absorbed by immunogen peptide.

## Contact information

Orders: order@immunoway.com  
Support: tech@immunoway.com  
Telephone: 877-594-3616 (Toll Free), 408-747-0185  
Website: http://www.immunoway.com  
Address: 2200 Ringwood Ave San Jose, CA 95131 USA



Please scan the QR code  
to access additional  
product information:  
**VAV1 Rabbit pAb**

---

For Research Use Only. Not for Use in Diagnostic Procedures.

[Antibody](#) | [ELISA Kits](#) | [Protein](#) | [Reagents](#)