

V-ATPase D Rabbit pAb

CatalogNo: YT4860

Orthogonal Validated 

Key Features

Host Species

- Rabbit

Reactivity

- Human, Mouse, Rat, Swine

Applications

- WB, ELISA

MW

- 28kD (Observed)

Isotype

- IgG

Recommended Dilution Ratios

WB 1:500-1:2000**ELISA 1:40000****Not yet tested in other applications.**

Storage

Storage*

-15°C to -25°C/1 year (Do not lower than -25°C)

Formulation

Liquid in PBS containing 50% glycerol, 0.5% BSA and 0.02% sodium azide.

Basic Information

Clonality

Polyclonal

Immunogen Information

Immunogen

Synthesized peptide derived from V-ATPase D . at AA range: 70-150

Specificity

V-ATPase D Polyclonal Antibody detects endogenous levels of V-ATPase D protein.

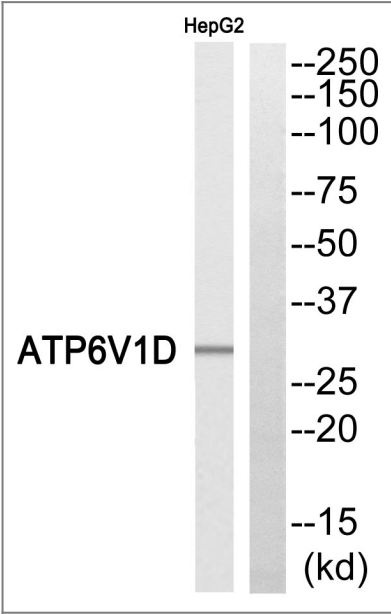
Target Information

Gene name

ATP6V1D

Protein Name	V-type proton ATPase subunit D		
	Organism	Gene ID	UniProt ID
	Human	51382 ;	Q9Y5K8 ;
	Mouse	73834 ;	P57746 ;
Cellular Localization	Membrane ; Peripheral membrane protein ; Cytoplasmic side . Cytoplasmic vesicle, clathrin-coated vesicle membrane ; Peripheral membrane protein . Cytoplasm, cytoskeleton, microtubule organizing center, centrosome . Cell projection, cilium . Localizes to centrosome and the base of the cilium. .		
Tissue specificity	Bone marrow,Brain,Heart,Pancreatic adenocarcinoma,Pituitary,Placent		
Function	Function:Subunit of the peripheral V1 complex of vacuolar ATPase. Vacuolar ATPase is responsible for acidifying a variety of intracellular compartments in eukaryotic cells, thus providing most of the energy required for transport processes in the vacuolar system.,similarity:Belongs to the V-ATPase D subunit family.,subunit:V-ATPase is an heteromultimeric enzyme composed of a peripheral catalytic V1 complex (components A to H) attached to an integral membrane V0 proton pore complex (components: a, c, c', c'' and d).,		

Validation Data



Western blot analysis of ATP6V1D Antibody. The lane on the right is blocked with the ATP6V1D peptide.

Contact information

Orders: order@immunoway.com
Support: tech@immunoway.com
Telephone: 877-594-3616 (Toll Free), 408-747-0185
Website: <http://www.immunoway.com>
Address: 2200 Ringwood Ave San Jose, CA 95131 USA



Please scan the QR code
to access additional
product information:
**V-ATPase D Rabbit
pAb**

For Research Use Only. Not for Use in Diagnostic Procedures.

[Antibody](#) | [ELISA Kits](#) | [Protein](#) | [Reagents](#)