

Vasohibin Rabbit pAb

CatalogNo: YT4853

| Key Features

Host Species

- Rabbit

Reactivity

- Human, Mouse, Rat

Applications

- WB, IHC, ELISA

MW

- 40kD (Observed)

Isotype

- IgG

| Recommended Dilution Ratios

IHC 1:200-1:1000

WB 1:500-1:2000

ELISA 1:40000

Not yet tested in other applications.

| Storage

Storage*

-15°C to -25°C/1 year (Do not lower than -25°C)

Formulation

Liquid in PBS containing 50% glycerol, 0.5% BSA and 0.02% sodium azide.

| Basic Information

Clonality

Polyclonal

| Immunogen Information

Immunogen

The antiserum was produced against synthesized peptide derived from human VASH1. AA range: 261-310

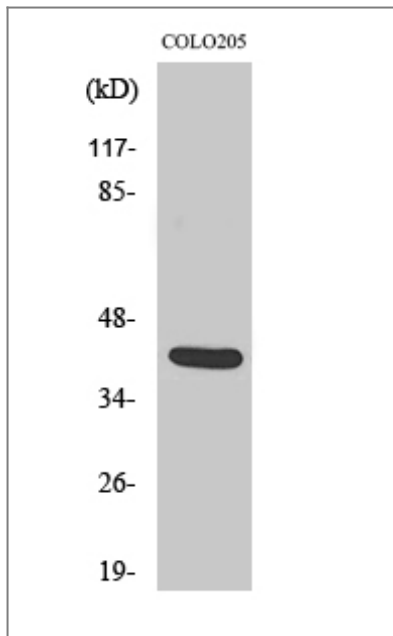
Specificity

Vasohibin Polyclonal Antibody detects endogenous levels of Vasohibin protein.

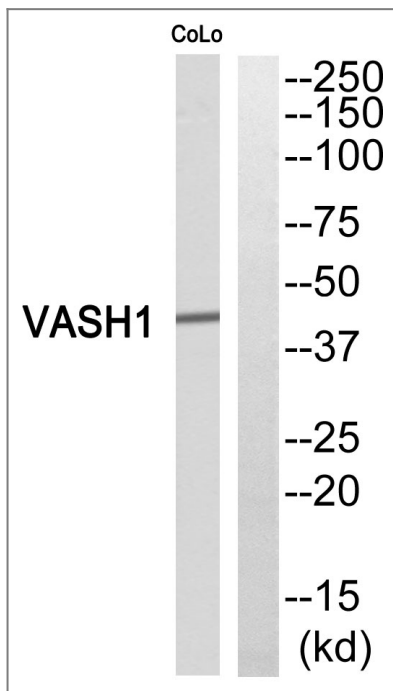
| Target Information

Gene name	VASH1		
Protein Name	Vasohibin-1		
	Organism	Gene ID	UniProt ID
	Human	22846;	Q7L8A9;
	Mouse	238328;	Q8C1W1;
Cellular Localization	Cytoplasm . Secreted . Mainly localizes in the cytoplasm (PubMed:27879017). Some fraction is secreted via a non-canonical secretion system; interaction with SVBP promotes secretion (PubMed:27879017). .		
Tissue specificity	Preferentially expressed in endothelial cells (PubMed:15467828, PubMed:16707096). Highly expressed in fetal organs (PubMed:15467828). Expressed in brain and placenta, and at lower level in heart and kidney (PubMed:15467828). Highly detected in microvessels endothelial cells of atherosclerotic lesions (PubMed:16707096).		
Function	Caution:Although probably secreted, it lacks a canonical signal sequence.,Function:Angiogenesis inhibitor. Inhibits migration, proliferation and network formation by endothelial cells as well as angiogenesis. This inhibitory effect is selective to endothelial cells as it does not affect the migration of smooth muscle cells or fibroblasts. Does not affect the proliferation of cancer cells in vitro, but inhibits tumor growth and tumor angiogenesis. Acts in an autocrine manner. Inhibits artery neointimal formation and macrophage infiltration. Exhibits heparin-binding activity.,induction:By VEGF.,PTM:2 major forms (42 and 36 kDa) and 2 minors (32 and 27 kDa) may be processed by proteolytic cleavage. The largest form (42 kDa) seems to be secreted and the other major form (63 kDa) seems to accumulate within the cells or pericellular milieu. Polypeptide consisting of Met-77 to Arg-318 may correspond to the 27 kDa form and that consisting of Met-77 to Val-365 may correspond to the 36 kDa form.,similarity:Belongs to the vasohibin family.,tissue specificity:Preferentially expressed in endothelial cells. Highly expressed in fetal organs. Expressed in brain and placenta, and at lower level in heart and kidney. Highly detected in microvessels endothelial cells of atherosclerotic lesions.,		

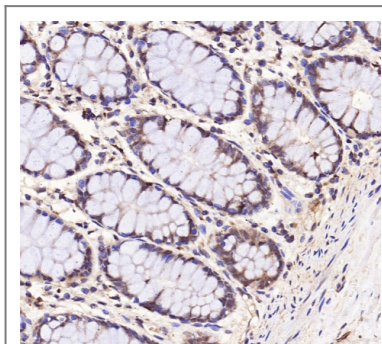
| Validation Data



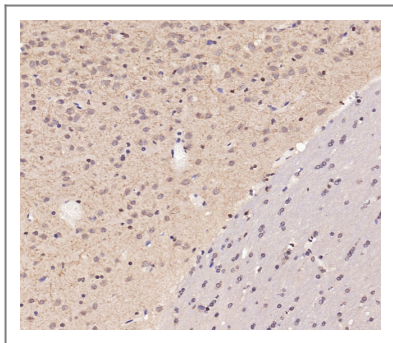
Western Blot analysis of various cells using Vasohibin Polyclonal Antibody. Secondary antibody(catalog#:RS0002) was diluted at 1:20000



Western blot analysis of VASH1 Antibody. The lane on the right is blocked with the VASH1 peptide.



Immunohistochemical analysis of paraffin-embedded human colon. 1,primary Antibody was diluted at 1:200(4° overnight). 2, EDTA pH 9.0 was used for antigen retrieval. 3 Reday to use Secondary antibody(catalog: RS0011) was used at 37°C, 30min



Immunohistochemical analysis of paraffin-embedded human brain. 1,primary Antibody was diluted at 1:200(4° overnight). 2, EDTA pH 9.0 was used for antigen retrieval 3 Reday to use Secondary antibody(catalog: RS0011) was used at 37°C, 30min

| Contact information

Orders: order@immunoway.com
Support: tech@immunoway.com
Telephone: 877-594-3616 (Toll Free), 408-747-0185
Website: <http://www.immunoway.com>
Address: 2200 Ringwood Ave San Jose, CA 95131 USA



Please scan the QR code to access additional product information:
Vasohibin Rabbit pAb

For Research Use Only. Not for Use in Diagnostic Procedures.

[Antibody](#) | [ELISA Kits](#) | [Protein](#) | [Reagents](#)