

USP24 Rabbit pAb

CatalogNo: YT4833

Key Features

Host Species

- Rabbit

Reactivity

- Human, Mouse

Applications

- IHC, IF, ELISA

MW

- 211kD (Calculated)

Isotype

- IgG

Recommended Dilution Ratios

IHC 1:100-1:300

ELISA 1:10000

IF 1:50-200

Storage

Storage*

-15°C to -25°C/1 year(Do not lower than -25°C)

Formulation

Liquid in PBS containing 50% glycerol, 0.5% BSA and 0.02% sodium azide.

Basic Information

Clonality

Polyclonal

Immunogen Information

Immunogen

The antiserum was produced against synthesized peptide derived from human USP24. AA range:21-70

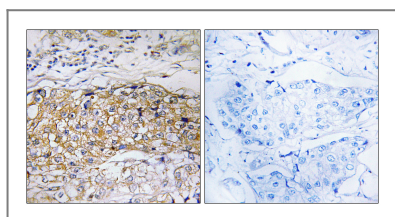
Specificity

USP24 Polyclonal Antibody detects endogenous levels of USP24 protein.

Target Information

Gene name	USP24		
Protein Name	Ubiquitin carboxyl-terminal hydrolase 24		
	Organism	Gene ID	UniProt ID
	Human	23358;	Q9UPU5;
	Mouse	329908;	B1AY13;
Cellular Localization	cytoplasm,		
Tissue specificity	Brain,Epithelium,Placenta,Platelet,T-cell,		
Function	Catalytic activity:Ubiquitin C-terminal thioester + H(2)O = ubiquitin + a thiol.,Function:Involved in the ubiquitin-dependent proteolytic pathway in conjunction with the 26S proteasome.,PTM:Phosphorylated upon DNA damage, probably by ATM or ATR.,similarity:Belongs to the peptidase C19 family.,similarity:Contains 1 UBA domain.,		

Validation Data



Immunohistochemistry analysis of paraffin-embedded human breast carcinoma tissue, using USP24 Antibody. The picture on the right is blocked with the synthesized peptide.

Contact information

Orders: order@immunoway.com
 Support: tech@immunoway.com
 Telephone: 877-594-3616 (Toll Free), 408-747-0185
 Website: <http://www.immunoway.com>
 Address: 2200 Ringwood Ave San Jose, CA 95131 USA



Please scan the QR code to access additional product information:
USP24 Rabbit pAb

For Research Use Only. Not for Use in Diagnostic Procedures.

[Antibody](#) | [ELISA Kits](#) | [Protein](#) | [Reagents](#)