

## UFD2 Rabbit pAb

CatalogNo: YT4818

### Key Features

#### Host Species

- Rabbit

#### Reactivity

- Human, Mouse

#### Applications

- IHC, IF, ELISA

#### MW

- 146kD (Calculated)

#### Isotype

- IgG

### Recommended Dilution Ratios

IHC 1:100-1:300

ELISA 1:5000

IF 1:50-200

### Storage

#### Storage\*

-15°C to -25°C/1 year (Do not lower than -25°C)

#### Formulation

Liquid in PBS containing 50% glycerol, 0.5% BSA and 0.02% sodium azide.

### Basic Information

#### Clonality

Polyclonal

### Immunogen Information

#### Immunogen

Synthesized peptide derived from the Internal region of human UFD2.

#### Specificity

UFD2 Polyclonal Antibody detects endogenous levels of UFD2 protein.

### Target Information

#### Gene name

UBE4B

**Protein Name** Ubiquitin conjugation factor E4 B

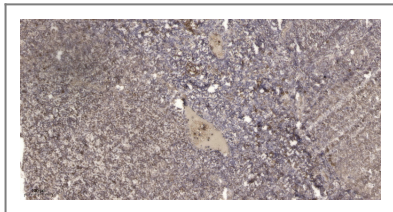
Organism	Gene ID	UniProt ID
Human	<a href="#">10277;</a>	<a href="#">O95155;</a>
Mouse	<a href="#">63958;</a>	<a href="#">Q9ES00;</a>

**Cellular Localization** Cytoplasm . Nucleus .

**Tissue specificity** Expressed in differentiated myotubes (at protein level) (PubMed:17369820). Highest expression in ovary, testis, heart and skeletal muscle (PubMed:11802788). Expression is low in colon, thymus and peripheral blood leukocytes (PubMed:11802788). Almost undetectable in lung and spleen (PubMed:11802788).

**Function** Function: Binds to the ubiquitin moieties of preformed conjugates and catalyzes ubiquitin chain assembly in conjunction with E1, E2, and E3., PTM: Proteolytically cleaved by caspases during apoptosis. Cleaved efficiently at Asp-123 by caspase-6 and granzyme B. Cleaved with approximately 10-fold less efficiency at Asp-109 by caspase-3 and caspase-7., similarity: Belongs to the ubiquitin conjugation factor E4 family., similarity: Contains 1 U-box domain., subunit: Interacts with VCP., tissue specificity: Highest expression in ovary, testis, heart and skeletal muscle. Expression is low in colon, thymus and peripheral blood leukocytes. Almost undetectable in lung and spleen.,

## Validation Data



Immunohistochemical analysis of paraffin-embedded human tonsil. 1, Antibody was diluted at 1:200 (4° overnight). 2, Tris-EDTA, pH 9.0 was used for antigen retrieval. 3, Secondary antibody was diluted at 1:200 (room temperature, 45 min).

## Contact information

Orders: [order@immunoway.com](mailto:order@immunoway.com)  
Support: [tech@immunoway.com](mailto:tech@immunoway.com)  
Telephone: 877-594-3616 (Toll Free), 408-747-0185  
Website: <http://www.immunoway.com>  
Address: 2200 Ringwood Ave San Jose, CA 95131 USA



Please scan the QR code to access additional product information:  
**UFD2 Rabbit pAb**