

## Ubr1 Rabbit pAb

CatalogNo: YT4808

### Key Features

#### Host Species

- Rabbit

#### Reactivity

- Human, Mouse

#### Applications

- WB, IHC, IF, ELISA

#### MW

- 200kD (Observed)

#### Isotype

- IgG

### Recommended Dilution Ratios

**WB 1:500-1:2000**

**IHC 1:100-1:300**

**ELISA 1:20000**

**IF 1:50-200**

### Storage

**Storage\*** -15°C to -25°C/1 year (Do not lower than -25°C)

**Formulation** Liquid in PBS containing 50% glycerol, 0.5% BSA and 0.02% sodium azide.

### Basic Information

**Clonality** Polyclonal

### Immunogen Information

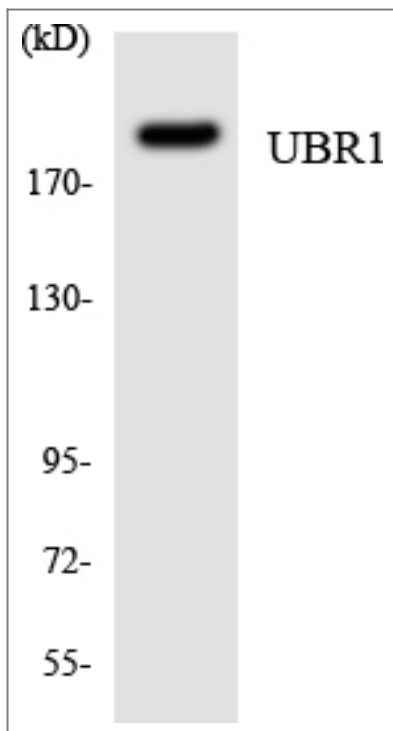
**Immunogen** The antiserum was produced against synthesized peptide derived from human UBR1. AA range: 821-870

**Specificity** Ubr1 Polyclonal Antibody detects endogenous levels of Ubr1 protein.

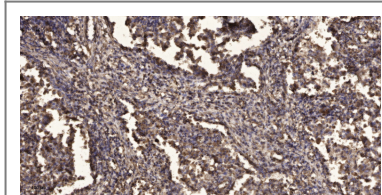
### Target Information

Gene name	UBR1		
Protein Name	E3 ubiquitin-protein ligase UBR1		
	Organism	Gene ID	UniProt ID
	Human	<a href="#">197131</a> ;	<a href="#">Q8I WV7</a> ;
	Mouse	<a href="#">22222</a> ;	<a href="#">O70481</a> ;
Cellular Localization	Cytoplasm, cytosol .		
Tissue specificity	Broadly expressed, with highest levels in skeletal muscle, kidney and pancreas. Present in acinar cells of the pancreas (at protein level).		
Function	developmental stage:Expressed in fetal pancreas.,Disease:Defects in UBR1 are a cause of Johanson-Blizzard syndrome (JBS) [MIM:243800]. This disorder includes congenital exocrine pancreatic insufficiency, multiple malformations such as nasal wing aplasia, and frequent mental retardation. Pancreas of individuals with JBS do not express UBR1 and show intrauterine-onset destructive pancreatitis.,Domain:The RING-H2 zinc finger is an atypical RING finger with a His ligand in place of the fourth Cys of the classical motif.,Function:E3 ubiquitin-protein ligase which is a component of the N-end rule pathway. Recognizes and binds to proteins bearing specific N-terminal residues that are destabilizing according to the N-end rule, leading to their ubiquitination and subsequent degradation. May be involved in pancreatic homeostasis.,pathway:Protein modification; protein ubiquitination.,PTM:Phosphorylated upon DNA damage, probably by ATM or ATR.,similarity:Belongs to the UBR1 family.,similarity:Contains 1 RING-type zinc finger.,similarity:Contains 1 UBR-type zinc finger.,subunit:Interacts with RECQL4.,tissue specificity:Broadly expressed, with highest levels in skeletal muscle, kidney and pancreas. Present in acinar cells of the pancreas (at protein level).,		

## | Validation Data



Western blot analysis of the lysates from HUVEC cells using UBR1 antibody.



Immunohistochemical analysis of paraffin-embedded human squamous cell carcinoma of lung. 1, Antibody was diluted at 1:200 (4° overnight). 2, Tris-EDTA, pH 9.0 was used for antigen retrieval. 3, Secondary antibody was diluted at 1:200 (room temperature, 45 min).

## Contact information

Orders: [order@immunoway.com](mailto:order@immunoway.com)  
 Support: [tech@immunoway.com](mailto:tech@immunoway.com)  
 Telephone: 877-594-3616 (Toll Free), 408-747-0185  
 Website: <http://www.immunoway.com>  
 Address: 2200 Ringwood Ave San Jose, CA 95131 USA



Please scan the QR code  
 to access additional  
 product information:  
**Ubr1 Rabbit pAb**

For Research Use Only. Not for Use in Diagnostic Procedures.

[Antibody](#) | [ELISA Kits](#) | [Protein](#) | [Reagents](#)