

UBE2D2 Rabbit pAb

CatalogNo: YT4798

Key Features

Host Species

- Rabbit

Reactivity

- Human, Mouse, Rat

Applications

- WB, ELISA

MW

- 17kD (Observed)

Isotype

- IgG

Recommended Dilution Ratios

WB 1:500-1:2000

ELISA 1:10000

Not yet tested in other applications.

Storage

Storage*

-15°C to -25°C/1 year (Do not lower than -25°C)

Formulation

Liquid in PBS containing 50% glycerol, 0.5% BSA and 0.02% sodium azide.

Basic Information

Clonality

Polyclonal

Immunogen Information

Immunogen

The antiserum was produced against synthesized peptide derived from human UBE2D2. AA range: 98-147

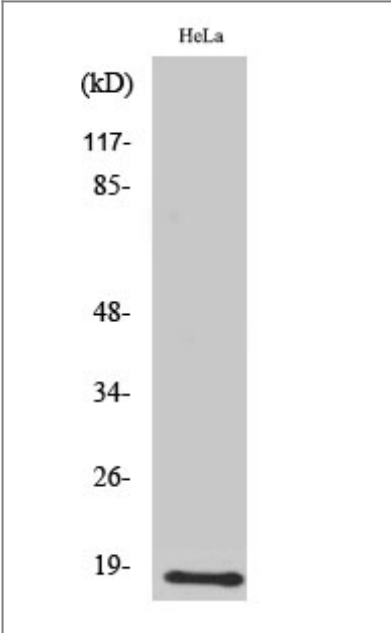
Specificity

UBE2D2 Polyclonal Antibody detects endogenous levels of UBE2D2 protein.

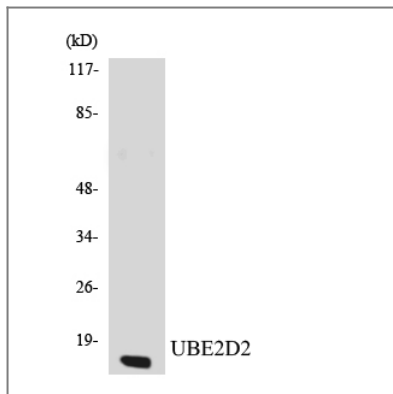
Target Information

| | | | |
|-----------------------|--|--------------------------|--------------------------|
| Gene name | UBE2D2 | | |
| Protein Name | Ubiquitin-conjugating enzyme E2 D2 | | |
| | Organism | Gene ID | UniProt ID |
| | Human | 7322 ; | P62837 ; |
| | Mouse | 56550 ; | P62838 ; |
| | Rat | 641452 ; | P62839 ; |
| Cellular Localization | ubiquitin ligase complex,nucleoplasm,cytosol,protein complex,extracellular exosome, | | |
| Tissue specificity | Brain,Cajal-Retzius cell,Testis, | | |
| Function | Catalytic activity:ATP + ubiquitin + protein lysine = AMP + diphosphate + protein N-ubiquityllysine.,Function:Catalyzes the covalent attachment of ubiquitin to other proteins. Mediates the selective degradation of short-lived and abnormal proteins. Functions in the E6/E6-AP-induced ubiquitination of p53/TP53.,pathway:Protein modification; protein ubiquitination.,similarity:Belongs to the ubiquitin-conjugating enzyme family.,subunit:Interacts with SCF (SKP1-CUL1-F-box protein) E3 ubiquitin ligase complex and with E3 ubiquitin-protein ligase PJA2., | | |

| Validation Data



Western Blot analysis of various cells using UBE2D2 Polyclonal Antibody diluted at 1:2000. Secondary antibody(catalog#:RS0002) was diluted at 1:20000



Western blot analysis of the lysates from K562 cells using UBE2D2 antibody.

Contact information

Orders: order@immunoway.com
Support: tech@immunoway.com
Telephone: 877-594-3616 (Toll Free), 408-747-0185
Website: <http://www.immunoway.com>
Address: 2200 Ringwood Ave San Jose, CA 95131 USA



Please scan the QR code
to access additional
product information:
UBE2D2 Rabbit pAb

For Research Use Only. Not for Use in Diagnostic Procedures.

[Antibody](#) | [ELISA Kits](#) | [Protein](#) | [Reagents](#)