

UBA2 Rabbit pAb

CatalogNo: YT4794

Orthogonal Validated 

Key Features

Host Species

- Rabbit

Reactivity

- Human, Mouse

Applications

- WB, IHC, IF, ELISA

MW

- 71kD (Observed)

Isotype

- IgG

Recommended Dilution Ratios

WB 1:500-1:2000**IHC 1:100-1:300****IF 1:200-1:1000****ELISA 1:10000****Not yet tested in other applications.**

Storage

Storage*

-15°C to -25°C/1 year (Do not lower than -25°C)

Formulation

Liquid in PBS containing 50% glycerol, 0.5% BSA and 0.02% sodium azide.

Basic Information

Clonality

Polyclonal

Immunogen Information

Immunogen

The antiserum was produced against synthesized peptide derived from human Uba2. AA range: 591-640

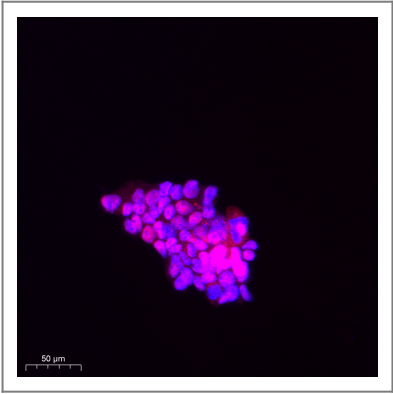
Specificity

UBA2 Polyclonal Antibody detects endogenous levels of UBA2 protein.

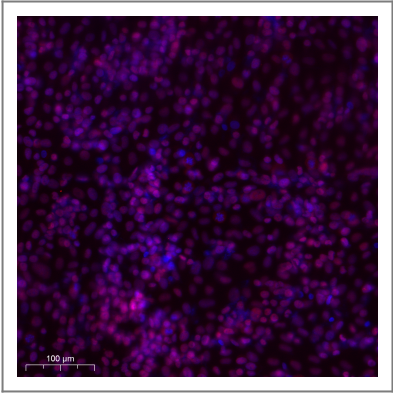
| Target Information

Gene name	UBA2		
Protein Name	SUMO-activating enzyme subunit 2		
	Organism	Gene ID	UniProt ID
	Human	10054 ;	Q9UBT2 ;
	Mouse		Q9Z1F9 ;
Cellular Localization	Cytoplasm. Nucleus. Shuttles between the cytoplasm and the nucleus, sumoylation is required either for nuclear translocation or nuclear retention.		
Tissue specificity	Brain,Cervix carcinoma,Fetal brain,Placenta,Skin,Testis,		
Function	Function:The dimeric enzyme acts as a E1 ligase for SUMO1, SUMO2, SUMO3, and probably SUMO4. It mediates ATP-dependent activation of SUMO proteins and formation of a thioester with a conserved cysteine residue on SAE2.,pathway:Protein modification; protein sumoylation.,similarity:Belongs to the ubiquitin-activating E1 family.,subunit:Heterodimer of SAE1 and SAE2. The complex binds SUMO proteins via SAE2.,		

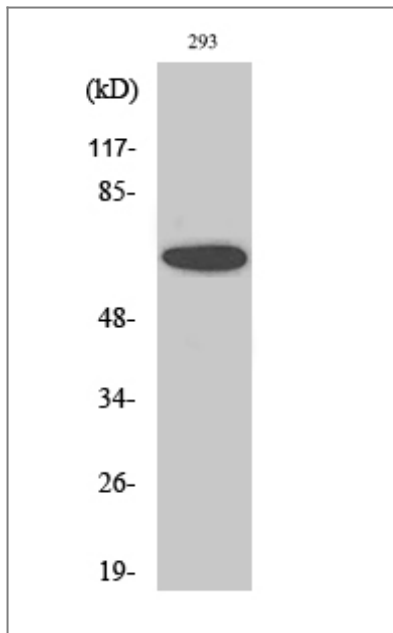
| Validation Data



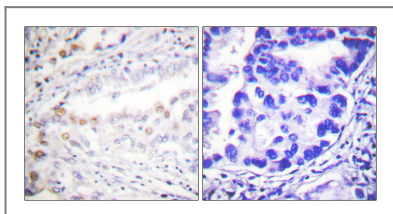
Immunofluorescence analysis of Caco2 cell. 1,primary Antibody was diluted at 1:100(4°C overnight). 2, Goat Anti Rabbit IgG (H&L) - AF594 Secondary antibody(catalog No: RS3611) was diluted at 1:500(room temperature, 50min).



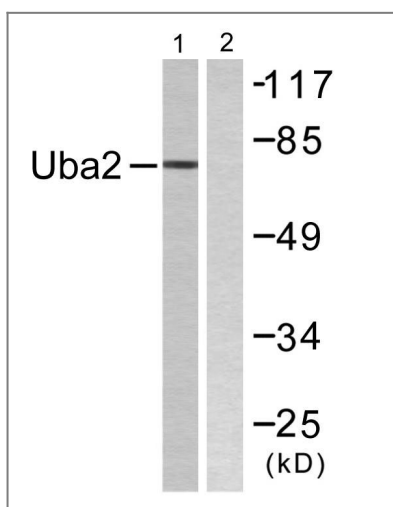
Immunofluorescence analysis of SiHa cell. 1,primary Antibody was diluted at 1:100(4°C overnight). 2, Goat Anti Rabbit IgG (H&L) - AF594 Secondary antibody(catalog No: RS3611) was diluted at 1:500(room temperature, 50min).



Western Blot analysis of various cells using UBA2 Polyclonal Antibody. Secondary antibody(catalog#:RS0002) was diluted at 1:20000 cells nucleus extracted by Minute TM Cytoplasmic and Nuclear Fractionation kit (SC-003, Invent biotech, MN, USA).



Immunohistochemistry analysis of paraffin-embedded human lung carcinoma tissue, using Uba2 Antibody. The picture on the right is blocked with the synthesized peptide.



Western blot analysis of lysates from 293 cells, treated with UV 5', using Uba2 Antibody. The lane on the right is blocked with the synthesized peptide.

Contact information

Orders: order@immunoway.com
 Support: tech@immunoway.com
 Telephone: 877-594-3616 (Toll Free), 408-747-0185
 Website: <http://www.immunoway.com>
 Address: 2200 Ringwood Ave San Jose, CA 95131 USA



Please scan the QR code to access additional product information:
UBA2 Rabbit pAb

