

## TWEAK Rabbit pAb

CatalogNo: YT4785

Orthogonal Validated 

### Key Features

**Host Species**

- Rabbit

**Reactivity**

- Human, Mouse

**Applications**

- WB, IHC, IF, ELISA

**MW**

- 27kD (Observed)

**Isotype**

- IgG

### Recommended Dilution Ratios

**WB 1:500-1:2000****IHC 1:100-1:300****IF 1:200-1:1000****ELISA 1:20000****Not yet tested in other applications.**

### Storage

**Storage\***

-15°C to -25°C/1 year (Do not lower than -25°C)

**Formulation**

Liquid in PBS containing 50% glycerol, 0.5% BSA and 0.02% sodium azide.

### Basic Information

**Clonality**

Polyclonal

### Immunogen Information

**Immunogen**

The antiserum was produced against synthesized peptide derived from human TNFSF12. AA range: 41-90

**Specificity**

TWEAK Polyclonal Antibody detects endogenous levels of TWEAK protein.

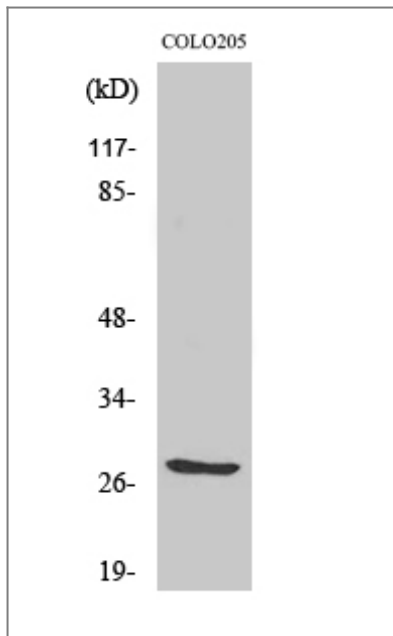
---

## | Target Information

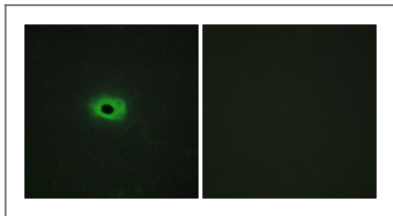
Gene name	TNFSF12		
Protein Name	Tumor necrosis factor ligand superfamily member 12		
	Organism	Gene ID	UniProt ID
	Human	<a href="#">8742</a> ;	<a href="#">O43508</a> ;
	Mouse	<a href="#">21944</a> ;	<a href="#">O54907</a> ;
Cellular Localization	Cell membrane ; Single-pass type II membrane protein .; [Tumor necrosis factor ligand superfamily member 12, secreted form]: Secreted.; [Isoform TWE-PRIL]: Cell membrane; Single-pass membrane protein.		
Tissue specificity	Highly expressed in adult heart, pancreas, skeletal muscle, brain, colon, small intestine, lung, ovary, prostate, spleen, lymph node, appendix and peripheral blood lymphocytes. Low expression in kidney, testis, liver, placenta, thymus and bone marrow. Also detected in fetal kidney, liver, lung and brain.		
Function	Function: Binds to FN14 and possibly also to TNFRSF12/APO3. Weak inducer of apoptosis in some cell types. Mediates NF-kappa-B activation. Promotes angiogenesis and the proliferation of endothelial cells. Also involved in induction of inflammatory cytokines. ,Function: Cytokine that binds to TNFRSF13B/TACI and to TNFRSF17/BCMA. May be implicated in the regulation of tumor cell growth. May be involved in monocyte/macrophage-mediated immunological processes. ,induction: Down-regulated by phorbol myristate acetate/ionomycin treatment. ,PTM: The precursor is cleaved by furin. ,PTM: The soluble form derives from the membrane form by proteolytic processing. ,similarity: Belongs to the tumor necrosis factor family. ,subunit: Homotrimer (Potential). Interacts with the angiogenic factor AGGF1/VG5Q. ,subunit: Homotrimer . ,tissue specificity: Expressed at high levels in transformed cell lines, cancers of colon, thyroid, lymphoid tissues and specifically expressed in monocytes and macrophages. ,tissue specificity: Highly expressed in adult heart, pancreas, skeletal muscle, brain, colon, small intestine, lung, ovary, prostate, spleen, lymph node, appendix and peripheral blood lymphocytes. Low expression in kidney, testis, liver, placenta, thymus and bone marrow. Also detected in fetal kidney, liver, lung and brain. ,		

---

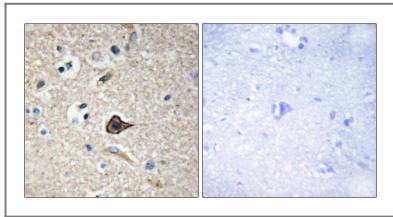
## | Validation Data



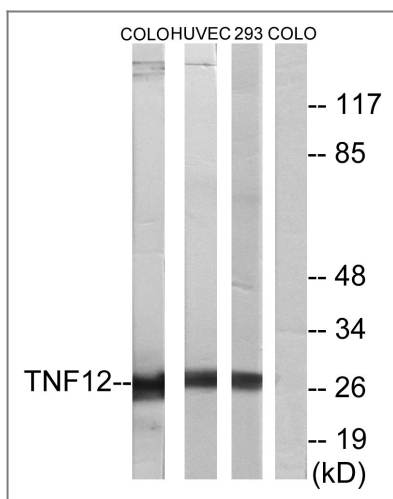
Western Blot analysis of 293 cells using TWEAK Polyclonal Antibody diluted at 1:2000. Secondary antibody(catalog#:RS0002) was diluted at 1:20000



Immunofluorescence analysis of HeLa cells, using TNF12 Antibody. The picture on the right is blocked with the synthesized peptide.



Immunohistochemistry analysis of paraffin-embedded human brain, using TNF12 Antibody. The picture on the right is blocked with the synthesized peptide.



Western blot analysis of lysates from COLO205, HUVEC cells, and 293 cells, using TNF12 Antibody. The lane on the right is blocked with the synthesized peptide.

## Contact information

Orders: [order@immunoway.com](mailto:order@immunoway.com)  
Support: [tech@immunoway.com](mailto:tech@immunoway.com)  
Telephone: 877-594-3616 (Toll Free), 408-747-0185  
Website: <http://www.immunoway.com>  
Address: 2200 Ringwood Ave San Jose, CA 95131 USA



Please scan the QR code  
to access additional  
product information:  
**TWEAK Rabbit pAb**

---

For Research Use Only. Not for Use in Diagnostic Procedures.

[Antibody](#) | [ELISA Kits](#) | [Protein](#) | [Reagents](#)