

# TUTase Rabbit pAb

CatalogNo: YT4784

## Key Features

### Host Species

- Rabbit

### Reactivity

- Human, Mouse, Rat

### Applications

- WB, IHC, IF, ELISA

### MW

- 95kD (Observed)

### Isotype

- IgG

## Storage

**Storage\*** -15°C to -25°C/1 year (Do not lower than -25°C)

**Formulation** Liquid in PBS containing 50% glycerol, 0.5% BSA and 0.02% sodium azide.

## Recommended Dilution Ratios

**WB 1:500-1:2000**

**IHC 1:100-1:300**

**ELISA 1:20000**

**IF 1:50-200**

## Basic Information

**Clonality** Polyclonal

## Immunogen Information

**Immunogen** The antiserum was produced against synthesized peptide derived from human TUT1. AA range: 291-340

**Specificity** TUTase Polyclonal Antibody detects endogenous levels of TUTase protein.

## Target Information

**Gene name** TUT1

**Protein Name** Speckle targeted PIP5K1A-regulated poly(A) polymerase

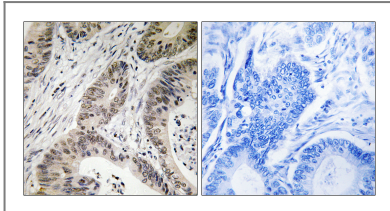
Organism	Gene ID	UniProt ID
Human	<a href="#">64852;</a>	<a href="#">Q9H6E5;</a>
Mouse		<a href="#">Q8R3F9;</a>

**Cellular Localization** Nucleus, nucleolus . Nucleus speckle .

**Tissue specificity** Widely expressed.

**Function** Catalytic activity:UTP + RNA(n) = diphosphate + RNA(n+1).,Function:Highly specific terminal uridylyltransferase that exclusively accepts U6 snRNA as substrate. U6 snRNA is unique in that nucleotides are both added to and removed from its 3'-end. U6-TUTase is responsible for a controlled elongation reaction that results in the restoration of the four 3'-terminal UMP-residues found in newly transcribed U6 snRNA.,PTM:Phosphorylated upon DNA damage, probably by ATM or ATR.,similarity:Contains 1 RRM (RNA recognition motif) domain.,

## Validation Data



Immunohistochemistry analysis of paraffin-embedded human colon carcinoma, using TUT1 Antibody. The picture on the right is blocked with the synthesized peptide.

## Contact information

Orders: [order@immunoway.com](mailto:order@immunoway.com)  
Support: [tech@immunoway.com](mailto:tech@immunoway.com)  
Telephone: 877-594-3616 (Toll Free), 408-747-0185  
Website: <http://www.immunoway.com>  
Address: 2200 Ringwood Ave San Jose, CA 95131 USA



Please scan the QR code to access additional product information:  
**TUTase Rabbit pAb**