

## Tubulin $\alpha$ -3C/D/E Rabbit pAb

CatalogNo: YT4779

### Key Features

**Host Species**

- Rabbit

**Reactivity**

- Human, Mouse, Rat

**Applications**

- WB, ELISA

**MW**

- 50kD (Observed)

**Isotype**

- IgG

### Recommended Dilution Ratios

**WB 1:500-1:2000****ELISA 1:5000****Not yet tested in other applications.**

### Storage

**Storage\***

-15°C to -25°C/1 year (Do not lower than -25°C)

**Formulation**

Liquid in PBS containing 50% glycerol, 0.5% BSA and 0.02% sodium azide.

### Basic Information

**Clonality**

Polyclonal

### Immunogen Information

**Immunogen**

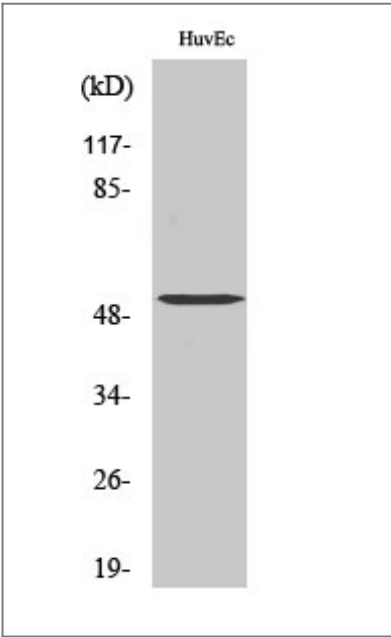
The antiserum was produced against synthesized peptide derived from human TUBA3C/E. AA range: 201-250

**Specificity**Tubulin  $\alpha$ -3C/D/E Polyclonal Antibody detects endogenous levels of Tubulin  $\alpha$ -3C/D/E protein.

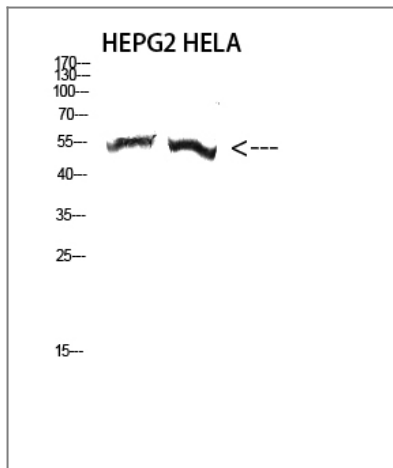
### Target Information

Gene name	TUBA3C/D/TUBA3E		
Protein Name	Tubulin alpha-3C/D chain/Tubulin alpha-3E chain		
	Organism	Gene ID	UniProt ID
	Human	<a href="#">113457</a> ; <a href="#">7278</a> ; <a href="#">112714</a> ;	<a href="#">Q13748</a> ; <a href="#">Q6PEY2</a> ;
Cellular Localization	nucleus,cytoplasm,microtubule,		
Tissue specificity	Epithelium,Skin,Testis,		
Function	Function:Tubulin is the major constituent of microtubules. It binds two moles of GTP, one at an exchangeable site on the beta chain and one at a non-exchangeable site on the alpha-chain.,online information:Tubulin entry,PTM:Undergoes a tyrosination/detyrosination cycle, the cyclic removal and re-addition of a C-terminal tyrosine residue by the enzymes tubulin tyrosine carboxypeptidase (TTCP) and tubulin tyrosine ligase (TTL), respectively.,similarity:Belongs to the tubulin family.,subunit:Dimer of alpha and beta chains.,tissue specificity:Testis specific.,		

Validation Data



Western Blot analysis of various cells using Tubulin α-3C/D/E Polyclonal Antibody diluted at 1:2000. Secondary antibody(catalog#:RS0002) was diluted at 1:20000



Western Blot analysis of HEPG2 HELA cells using Antibody diluted at 2000. Secondary antibody(catalog#:RS0002) was diluted at 1:20000

## Contact information

Orders: [order@immunoway.com](mailto:order@immunoway.com)  
Support: [tech@immunoway.com](mailto:tech@immunoway.com)  
Telephone: 877-594-3616 (Toll Free), 408-747-0185  
Website: <http://www.immunoway.com>  
Address: 2200 Ringwood Ave San Jose, CA 95131 USA



Please scan the QR code to access additional product information:  
**Tubulin  $\alpha$ -3C/D/E**  
**Rabbit pAb**

For Research Use Only. Not for Use in Diagnostic Procedures.

[Antibody](#) | [ELISA Kits](#) | [Protein](#) | [Reagents](#)