

TTK Rabbit pAb

CatalogNo: YT4772

Orthogonal Validated 

Key Features

Host Species

- Rabbit

Reactivity

- Human, Mouse

Applications

- WB, IHC, IF, ELISA

MW

- 100kD (Observed)

Isotype

- IgG

Recommended Dilution Ratios

WB 1:500-1:2000**IHC 1:100-1:300****ELISA 1:10000****IF 1:50-200**

Storage

Storage* -15°C to -25°C/1 year (Do not lower than -25°C)**Formulation** Liquid in PBS containing 50% glycerol, 0.5% BSA and 0.02% sodium azide.

Basic Information

Clonality Polyclonal

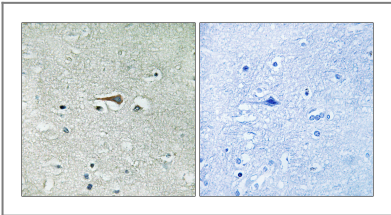
Immunogen Information

Immunogen The antiserum was produced against synthesized peptide derived from human TTK. AA range: 642-691**Specificity** TTK Polyclonal Antibody detects endogenous levels of TTK protein.

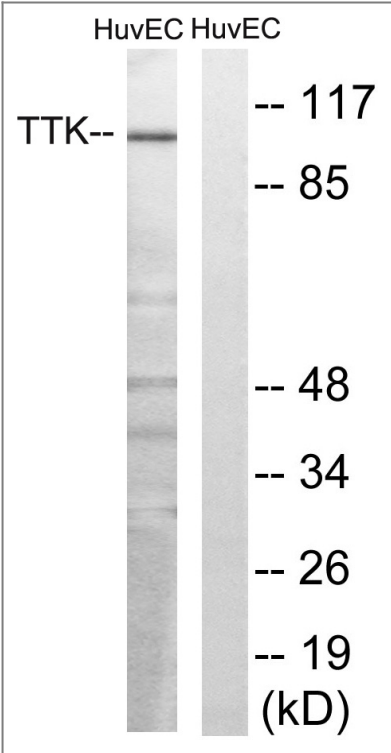
Target Information

Gene name	TTK		
Protein Name	Dual specificity protein kinase TTK		
	Organism	Gene ID	UniProt ID
	Human	7272 ;	P33981 ;
	Mouse		P35761 ;
Cellular Localization	kinetochore,cytoplasm,spindle,membrane,		
Tissue specificity	Present in rapidly proliferating cell lines.		
Function	Catalytic activity:ATP + a protein = ADP + a phosphoprotein.,Function:Phosphorylates proteins on serine, threonine, and tyrosine. Probably associated with cell proliferation.,similarity:Belongs to the protein kinase superfamily.,similarity:Belongs to the protein kinase superfamily. Ser/Thr protein kinase family.,similarity:Contains 1 protein kinase domain.,tissue specificity:Present in rapidly proliferating cell lines.,		

| Validation Data



Immunohistochemistry analysis of paraffin-embedded human brain tissue, using TTK Antibody. The picture on the right is blocked with the synthesized peptide.



Western blot analysis of lysates from HUVEC cells, treated with etoposide 25uM 24H, using TTK Antibody. The lane on the right is blocked with the synthesized peptide.

| Contact information

Orders: order@immunoway.com
Support: tech@immunoway.com
Telephone: 877-594-3616 (Toll Free), 408-747-0185
Website: <http://www.immunoway.com>
Address: 2200 Ringwood Ave San Jose, CA 95131 USA



Please scan the QR code
to access additional
product information:
TTK Rabbit pAb

For Research Use Only. Not for Use in Diagnostic Procedures.

[Antibody](#) | [ELISA Kits](#) | [Protein](#) | [Reagents](#)