

## TSSK 4 Rabbit pAb

CatalogNo: YT4767

### Key Features

**Host Species**

- Rabbit

**Reactivity**

- Human, Mouse

**Applications**

- WB, ELISA

**MW**

- 40kD (Observed)

**Isotype**

- IgG

### Storage

**Storage\*** -15°C to -25°C/1 year (Do not lower than -25°C)**Formulation** Liquid in PBS containing 50% glycerol, 0.5% BSA and 0.02% sodium azide.

### Recommended Dilution Ratios

**WB 1:500-1:2000****ELISA 1:10000****Not yet tested in other applications.**

### Basic Information

**Clonality** Polyclonal

### Immunogen Information

**Immunogen** The antiserum was produced against synthesized peptide derived from human TSSK4. AA range: 211-260**Specificity** TSSK 4 Polyclonal Antibody detects endogenous levels of TSSK 4 protein.

### Target Information

**Gene name** TSSK4

**Protein Name** Testis-specific serine/threonine-protein kinase 4

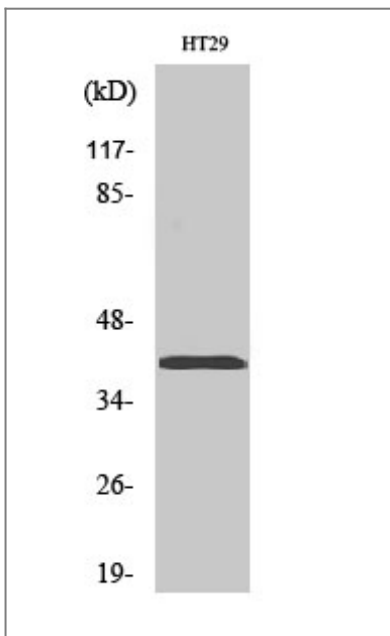
Organism	Gene ID	UniProt ID
Human	<a href="#">283629</a> ;	<a href="#">Q6SA08</a> ;
Mouse	<a href="#">71099</a> ;	<a href="#">Q9D411</a> ;

**Cellular Localization** Cytoplasmic vesicle, secretory vesicle, acrosome . Cell projection, cilium, flagellum . In spermatozoa, present in the sperm head and in the flagellum. .

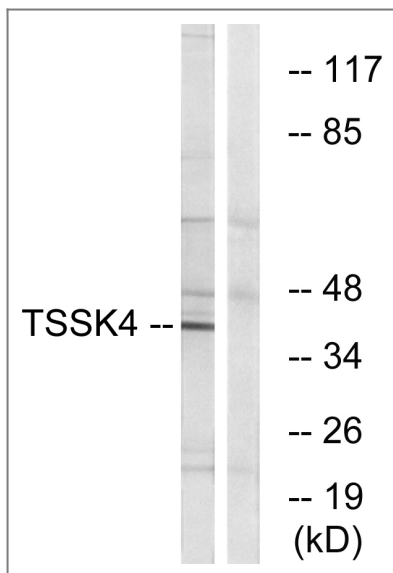
**Tissue specificity** Expressed only in the testis.

**Function** Catalytic activity:ATP + a protein = ADP + a phosphoprotein.,cofactor:Magnesium.,enzyme regulation:Activated by phosphorylation on Thr-197, potentially by autophosphorylation.,Function:May be involved in a signaling pathway during male germ cell development or mature sperm function (By similarity). Phosphorylates CREB1 on Ser-133 and stimulates downstream signaling.,PTM:Autophosphorylated (By similarity). Phosphorylated upon DNA damage, probably by ATM or ATR.,similarity:Belongs to the protein kinase superfamily. CAMK Ser/Thr protein kinase family.,similarity:Contains 1 protein kinase domain.,tissue specificity:Expressed only in the testis.,

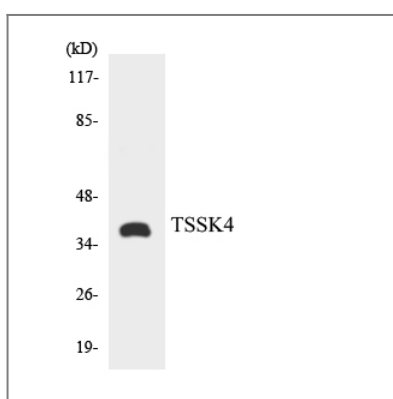
## Validation Data



Western Blot analysis of various cells using TSSK 4 Polyclonal Antibody. Secondary antibody(catalog#:RS0002) was diluted at 1:20000



Western blot analysis of lysates from HT-29 cells, using TSSK4 Antibody. The lane on the right is blocked with the synthesized peptide.



Western blot analysis of the lysates from HT-29 cells using TSSK4 antibody.

## Contact information

Orders: [order@immunoway.com](mailto:order@immunoway.com)  
 Support: [tech@immunoway.com](mailto:tech@immunoway.com)  
 Telephone: 877-594-3616 (Toll Free), 408-747-0185  
 Website: <http://www.immunoway.com>  
 Address: 2200 Ringwood Ave San Jose, CA 95131 USA



Please scan the QR code to access additional product information:  
**TSSK 4 Rabbit pAb**

For Research Use Only. Not for Use in Diagnostic Procedures.

[Antibody](#) | [ELISA Kits](#) | [Protein](#) | [Reagents](#)