

## TSHZ1 Rabbit pAb

CatalogNo: YT4762

### | Key Features

#### Host Species

- Rabbit

#### Reactivity

- Human, Mouse

#### Applications

- IHC, IF, ELISA

#### Isotype

- IgG

### | Recommended Dilution Ratios

IHC 1:100-1:300

ELISA 1:20000

IF 1:50-200

### | Storage

**Storage\*** -15°C to -25°C/1 year(Do not lower than -25°C)

**Formulation** Liquid in PBS containing 50% glycerol, 0.5% BSA and 0.02% sodium azide.

### | Basic Information

**Clonality** Polyclonal

### | Immunogen Information

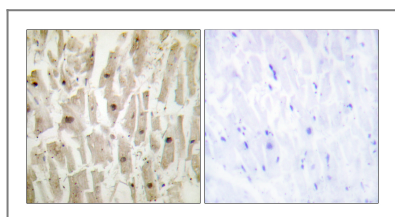
**Immunogen** The antiserum was produced against synthesized peptide derived from human TSH1. AA range:851-900

**Specificity** TSHZ1 Polyclonal Antibody detects endogenous levels of TSHZ1 protein.

### | Target Information

<b>Gene name</b>	TSHZ1		
<b>Protein Name</b>	Teashirt homolog 1		
	<b>Organism</b>	<b>Gene ID</b>	<b>UniProt ID</b>
	Human	<a href="#">10194;</a>	<a href="#">Q6ZSZ6;</a>
	Mouse	<a href="#">110796;</a>	<a href="#">Q5DTH5;</a>
<b>Cellular Localization</b>	Nucleus .		
<b>Tissue specificity</b>	Expressed in brain; strongly reduced in post-mortem elderly subjects with Alzheimer disease.		
<b>Function</b>	Function:Transcriptional regulator involved in developmental processes .,similarity:Belongs to the teashirt C2H2-type zinc-finger protein family.,similarity:Contains 1 homeobox DNA-binding domain.,similarity:Contains 5 C2H2-type zinc fingers.,		

## Validation Data



Immunohistochemistry analysis of paraffin-embedded human heart tissue, using TSH1 Antibody. The picture on the right is blocked with the synthesized peptide.

## Contact information

Orders: [order@immunoway.com](mailto:order@immunoway.com)  
 Support: [tech@immunoway.com](mailto:tech@immunoway.com)  
 Telephone: 877-594-3616 (Toll Free), 408-747-0185  
 Website: <http://www.immunoway.com>  
 Address: 2200 Ringwood Ave San Jose, CA 95131 USA



Please scan the QR code to access additional product information:  
**TSHZ1 Rabbit pAb**

For Research Use Only. Not for Use in Diagnostic Procedures.

[Antibody](#) | [ELISA Kits](#) | [Protein](#) | [Reagents](#)