

## TSEN54 Rabbit pAb

CatalogNo: YT4759

### Key Features

**Host Species**

- Rabbit

**Reactivity**

- Human, Mouse

**Applications**

- WB, IHC, IF, ELISA

**MW**

- 60kD (Observed)

**Isotype**

- IgG

### Recommended Dilution Ratios

**WB 1:500-1:2000****IHC 1:100-1:300****ELISA 1:20000****IF 1:50-200**

### Storage

**Storage\***

-15°C to -25°C/1 year (Do not lower than -25°C)

**Formulation**

Liquid in PBS containing 50% glycerol, 0.5% BSA and 0.02% sodium azide.

### Basic Information

**Clonality**

Polyclonal

### Immunogen Information

**Immunogen**

The antiserum was produced against synthesized peptide derived from human TSEN54. AA range: 261-310

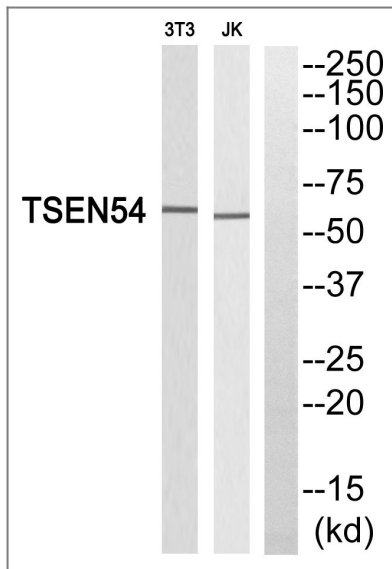
**Specificity**

TSEN54 Polyclonal Antibody detects endogenous levels of TSEN54 protein.

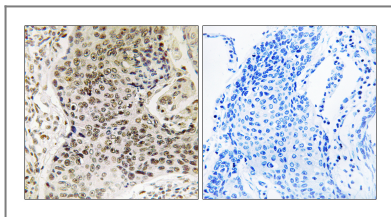
### Target Information

Gene name	TSEN54		
Protein Name	tRNA-splicing endonuclease subunit Sen54		
	Organism	Gene ID	UniProt ID
	Human	<a href="#">283989</a> ;	<a href="#">Q7Z6J9</a> ;
	Mouse		<a href="#">Q8C2A2</a> ;
Cellular Localization	Nucleus . Nucleus, nucleolus . May be transiently localized in the nucleolus. .		
Tissue specificity	Blood,Cerebellum,Uterus,		
Function	<p>Disease:Defects in TSEN54 are the cause of pontocerebellar hypoplasia type 2A (PCH2A) [MIM:277470]. PCH type 2 is characterized by progressive microcephaly from birth combined with extrapyramidal dyskinesia and chorea, epilepsy, and normal spinal cord findings.,Disease:Defects in TSEN54 are the cause of pontocerebellar hypoplasia type 4 (PCH4) [MIM:225753]. Pontocerebellar hypoplasia (PCH) is a heterogeneous group of disorders characterized by an abnormally small cerebellum and brainstem. PCH4 is characterized by severe course and early lethality.,Function:Non-catalytic subunit of the tRNA-splicing endonuclease complex, a complex responsible for identification and cleavage of the splice sites in pre-tRNA. It cleaves pre-tRNA at the 5' and 3' splice sites to release the intron. The products are an intron and two tRNA half-molecules bearing 2',3' cyclic phosphate and 5'-OH termini. There are no conserved sequences at the splice sites, but the intron is invariably located at the same site in the gene, placing the splice sites an invariant distance from the constant structural features of the tRNA body. The tRNA splicing endonuclease is also involved in mRNA processing via its association with pre-mRNA 3' end processing factors, establishing a link between pre-tRNA splicing and pre-mRNA 3' end formation, suggesting that the endonuclease subunits function in multiple RNA-processing events.,PTM:Phosphorylated upon DNA damage, probably by ATM or ATR.,similarity:Belongs to the SEN54 family.,subcellular location:May be transiently localized in the nucleolus.,subunit:tRNA splicing endonuclease is a heterotetramer composed of SEN2, SEN15, SEN34/LENG5 and SEN54. tRNA splicing endonuclease complex also contains proteins of the Pre-mRNA 3' end processing machinery such as CLP1, CPSF1, CPSF4 and CSTF2. Also belongs to a complex containing isoform 2 of SEN2.,</p>		

| Validation Data



Western blot analysis of TSEN54 Antibody. The lane on the right is blocked with the TSEN54 peptide.



Immunohistochemistry analysis of paraffin-embedded human lung carcinoma, using TSEN54 Antibody. The lane on the right is blocked with the TSEN54 peptide.

## Contact information

Orders: [order@immunoway.com](mailto:order@immunoway.com)  
 Support: [tech@immunoway.com](mailto:tech@immunoway.com)  
 Telephone: 877-594-3616 (Toll Free), 408-747-0185  
 Website: <http://www.immunoway.com>  
 Address: 2200 Ringwood Ave San Jose, CA 95131 USA



Please scan the QR code to access additional product information:  
**TSEN54 Rabbit pAb**

For Research Use Only. Not for Use in Diagnostic Procedures.

[Antibody](#) | [ELISA Kits](#) | [Protein](#) | [Reagents](#)