

TSC-22 Rabbit pAb

CatalogNo: YT4758

Key Features

Host Species

- Rabbit

Reactivity

- Human, Mouse, Rat

Applications

- WB, IHC, IF, ELISA

MW

- 16kD (Observed)

Isotype

- IgG

Storage

Storage* -15°C to -25°C/1 year (Do not lower than -25°C)

Formulation Liquid in PBS containing 50% glycerol, 0.5% BSA and 0.02% sodium azide.

Recommended Dilution Ratios

WB 1:500-1:2000

IHC 1:100-1:300

IF 1:200-1:1000

ELISA 1:20000

Not yet tested in other applications.

Basic Information

Clonality Polyclonal

Immunogen Information

Immunogen The antiserum was produced against synthesized peptide derived from human TSC22D1. AA range: 71-120

Specificity TSC-22 Polyclonal Antibody detects endogenous levels of TSC-22 protein.

| Target Information

Gene name TSC22D1

Protein Name TSC22 domain family protein 1

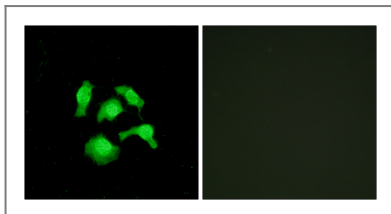
Organism	Gene ID	UniProt ID
Human	8848;	Q15714;
Mouse	21807;	P62500;
Rat	498545;	P62501;

Cellular Localization Cytoplasm . Nucleus .

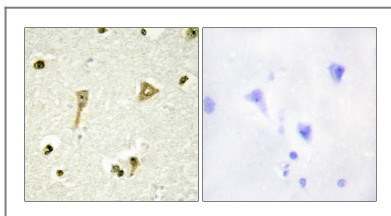
Tissue specificity Widely expressed in fetal and adult tissues.

Function Function:Transcriptional repressor. Acts on the C-type natriuretic peptide (CNP) promoter.,induction:In aortic endothelial cells, induced by cytokines, including TGFB.,similarity:Belongs to the TSC-22/Dip/Bun family.,subunit:Homodimer or heterodimer. Can form an heterodimer with TSC22D4.,tissue specificity:Widely expressed in fetal and adult tissues.,

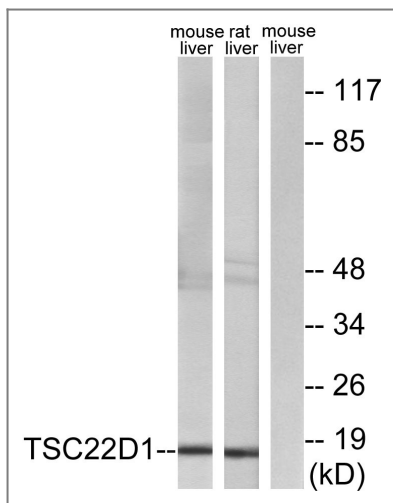
| Validation Data



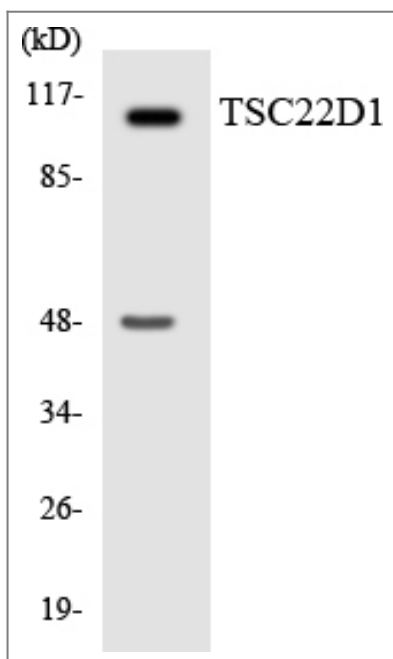
Immunofluorescence analysis of HepG2 cells, using TSC22D1 Antibody. The picture on the right is blocked with the synthesized peptide.



Immunohistochemistry analysis of paraffin-embedded human brain tissue, using TSC22D1 Antibody. The picture on the right is blocked with the synthesized peptide.



Western blot analysis of lysates from mouse liver and rat liver cells, using TSC22D1 Antibody. The lane on the right is blocked with the synthesized peptide.



Western blot analysis of the lysates from HepG2 cells using TSC22D1 antibody.

Contact information

Orders: order@immunoway.com
 Support: tech@immunoway.com
 Telephone: 877-594-3616 (Toll Free), 408-747-0185
 Website: <http://www.immunoway.com>
 Address: 2200 Ringwood Ave San Jose, CA 95131 USA



Please scan the QR code to access additional product information:
TSC-22 Rabbit pAb