

TSA-1 Rabbit pAb

CatalogNo: YT4757

Key Features

Host Species

- Rabbit

Reactivity

- Human, Mouse

Applications

- IF, ELISA

MW

- 14kD (Calculated)

Isotype

- IgG

Storage

Storage* -15°C to -25°C/1 year (Do not lower than -25°C)

Formulation Liquid in PBS containing 50% glycerol, 0.5% BSA and 0.02% sodium azide.

Recommended Dilution Ratios

IF 1:200-1:1000

ELISA 1:20000

Not yet tested in other applications

Basic Information

Clonality Polyclonal

Immunogen Information

Immunogen The antiserum was produced against synthesized peptide derived from human LY6E. AA range:17-66

Specificity TSA-1 Polyclonal Antibody detects endogenous levels of TSA-1 protein.

Target Information

Gene name LY6E

Protein Name Lymphocyte antigen 6E

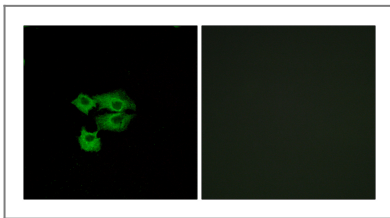
Organism	Gene ID	UniProt ID
Human	4061 ;	Q16553 ;
Mouse		Q64253 ;

Cellular Localization Cell membrane ; Lipid-anchor, GPI-anchor .

Tissue specificity Widely expressed, predominantly in liver, kidney, ovary, spleen and peripheral blood Leukocytes.

Function induction:By retinoic acid; in promyelocytic leukemia NB4 and in myeloblast HL-60 cell lines. Activated by IFN-alpha in monocytic cell line U-937 and in peripheral blood monocyte cells.,similarity:Contains 1 UPAR/Ly6 domain.,tissue specificity:Widely expressed, predominantly in liver, kidney, ovary, spleen and peripheral blood Leukocytes.,

Validation Data



Immunofluorescence analysis of A549 cells, using LY6E Antibody. The picture on the right is blocked with the synthesized peptide.

Contact information

Orders: order@immunoway.com
Support: tech@immunoway.com
Telephone: 877-594-3616 (Toll Free), 408-747-0185
Website: <http://www.immunoway.com>
Address: 2200 Ringwood Ave San Jose, CA 95131 USA



Please scan the QR code to access additional product information:
TSA-1 Rabbit pAb

For Research Use Only. Not for Use in Diagnostic Procedures.

[Antibody](#) | [ELISA Kits](#) | [Protein](#) | [Reagents](#)