

TR α Rabbit pAb

CatalogNo: YT4755

Key Features

Host Species

- Rabbit

Reactivity

- Human, Mouse, Rat

Applications

- WB, IHC, IF, ELISA

MW

- 55kD (Observed)

Isotype

- IgG

Recommended Dilution Ratios

WB 1:500-1:2000

IHC 1:100-1:300

ELISA 1:10000

IF 1:50-200

Storage

Storage* -15°C to -25°C/1 year (Do not lower than -25°C)

Formulation Liquid in PBS containing 50% glycerol, 0.5% BSA and 0.02% sodium azide.

Basic Information

Clonality Polyclonal

Immunogen Information

Immunogen The antiserum was produced against synthesized peptide derived from human Thyroid Hormone Receptor alpha. AA range:10-59

Specificity TR α Polyclonal Antibody detects endogenous levels of TR α protein.

Target Information

Gene name THRA

Protein Name Thyroid hormone receptor alpha

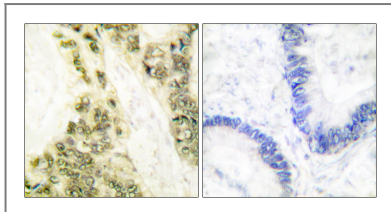
Organism	Gene ID	UniProt ID
Human	7067;	P10827;
Mouse	21833;	P63058;
Rat	81812;	P63059;

Cellular Localization Nucleus.; [Isoform Alpha-2]: Cytoplasm . Nucleus . When overexpressed found in the cytoplasm where it colocalizes with TACC1. .

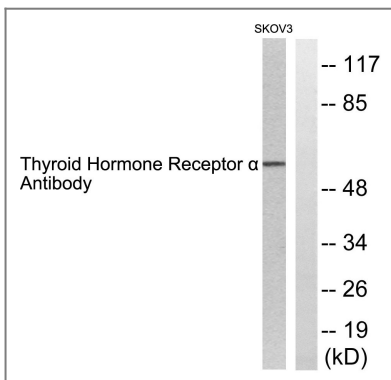
Tissue specificity Brain,Brain cortex,Hippocampus,Kidney,Muscle,Testis,

Function Domain:Composed of three domains: a modulating N-terminal domain, a DNA-binding domain and a C-terminal steroid-binding domain.,Function:Nuclear hormone receptor. High affinity receptor for triiodothyronine.,similarity:Belongs to the nuclear hormone receptor family.,similarity:Belongs to the nuclear hormone receptor family. NR1 subfamily.,similarity:Contains 1 nuclear receptor DNA-binding domain.,subunit:Interacts with NCOA3 and NCOA6 coactivators, leading to a strong increase of transcription of target genes. Probably interacts with SFPQ. Interacts with C1D (By similarity). Interacts with AKAP13.,

Validation Data



Immunohistochemistry analysis of paraffin-embedded human colon carcinoma tissue, using Thyroid Hormone Receptor alpha Antibody. The picture on the right is blocked with the synthesized peptide.



Western blot analysis of lysates from SKOV3 cells, using Thyroid Hormone Receptor alpha Antibody. The lane on the right is blocked with the synthesized peptide.

Contact information

Orders: order@immunoway.com
Support: tech@immunoway.com
Telephone: 877-594-3616 (Toll Free), 408-747-0185
Website: http://www.immunoway.com
Address: 2200 Ringwood Ave San Jose, CA 95131 USA



Please scan the QR code
to access additional
product information:
TR α Rabbit pAb

For Research Use Only. Not for Use in Diagnostic Procedures.

[Antibody](#) | [ELISA Kits](#) | [Protein](#) | [Reagents](#)