

## TRIM59 Rabbit pAb

CatalogNo: YT4737

Orthogonal Validated 

### Key Features

**Host Species**

- Rabbit

**Reactivity**

- Human, Mouse

**Applications**

- WB, IHC, IF, ELISA

**MW**

- 47kD (Observed)

**Isotype**

- IgG

### Recommended Dilution Ratios

**WB 1:500-1:2000****IHC 1:100-1:300****IF 1:200-1:1000****ELISA 1:40000****Not yet tested in other applications.**

### Storage

**Storage\***

-15°C to -25°C/1 year (Do not lower than -25°C)

**Formulation**

Liquid in PBS containing 50% glycerol, 0.5% BSA and 0.02% sodium azide.

### Basic Information

**Clonality**

Polyclonal

### Immunogen Information

**Immunogen**

The antiserum was produced against synthesized peptide derived from human TRIM59. AA range: 191-240

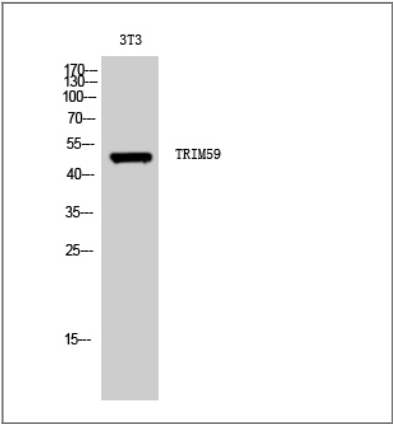
**Specificity**

TRIM59 Polyclonal Antibody detects endogenous levels of TRIM59 protein.

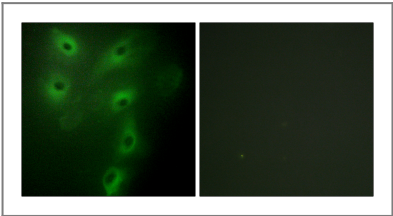
## Target Information

Gene name	TRIM59		
Protein Name	Tripartite motif-containing protein 59		
	Organism	Gene ID	UniProt ID
	Human	<a href="#">286827</a> ;	<a href="#">Q8IWR1</a> ;
	Mouse	<a href="#">66949</a> ;	<a href="#">Q922Y2</a> ;
Cellular Localization	Endoplasmic reticulum membrane ; Single-pass membrane protein .		
Tissue specificity	Human testis,		
Function	similarity:Belongs to the TRIM/RBCC family.,similarity:Contains 1 B box-type zinc finger.,similarity:Contains 1 RING-type zinc finger.,		

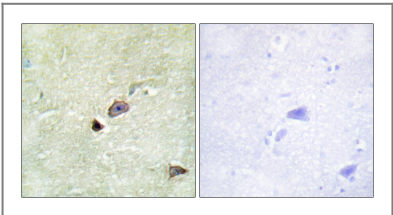
## Validation Data



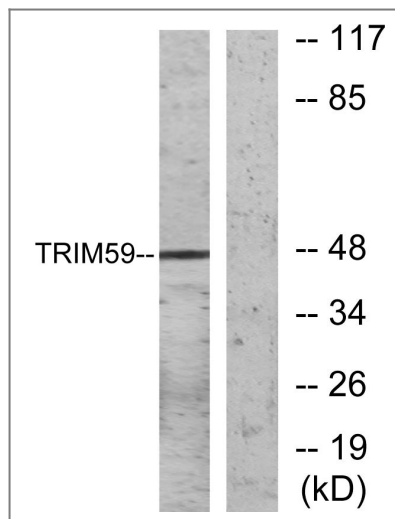
Western Blot analysis of 3T3 cells using TRIM59 Polyclonal Antibody. Secondary antibody(catalog#:RS0002) was diluted at 1:20000



Immunofluorescence analysis of HeLa cells, using TRIM59 Antibody. The picture on the right is blocked with the synthesized peptide.



Immunohistochemistry analysis of paraffin-embedded human brain tissue, using TRIM59 Antibody. The picture on the right is blocked with the synthesized peptide.



Western blot analysis of lysates from NIH/3T3 cells, using TRIM59 Antibody. The lane on the right is blocked with the synthesized peptide.

## | Contact information

Orders: [order@immunoway.com](mailto:order@immunoway.com)  
Support: [tech@immunoway.com](mailto:tech@immunoway.com)  
Telephone: 877-594-3616 (Toll Free), 408-747-0185  
Website: <http://www.immunoway.com>  
Address: 2200 Ringwood Ave San Jose, CA 95131 USA



Please scan the QR code to access additional product information:  
**TRIM59 Rabbit pAb**

For Research Use Only. Not for Use in Diagnostic Procedures.

[Antibody](#) | [ELISA Kits](#) | [Protein](#) | [Reagents](#)