

Treacle Rabbit pAb

CatalogNo: YT4731

Key Features

Host Species

- Rabbit

Reactivity

- Human, Mouse

Applications

- WB, IHC, IF, ELISA

MW

- 152kD (Observed)

Isotype

- IgG

Recommended Dilution Ratios

WB 1:500-1:2000

IHC 1:100-1:300

IF 1:200-1:1000

ELISA 1:10000

Not yet tested in other applications.

Storage

Storage*

-15°C to -25°C/1 year (Do not lower than -25°C)

Formulation

Liquid in PBS containing 50% glycerol, 0.5% BSA and 0.02% sodium azide.

Basic Information

Clonality

Polyclonal

Immunogen Information

Immunogen

The antiserum was produced against synthesized peptide derived from human TCOF1. AA range: 41-90

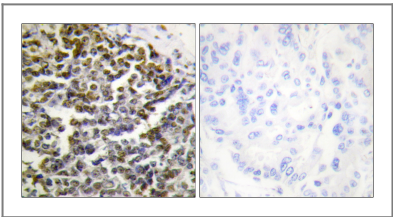
Specificity

Treacle Polyclonal Antibody detects endogenous levels of Treacle protein.

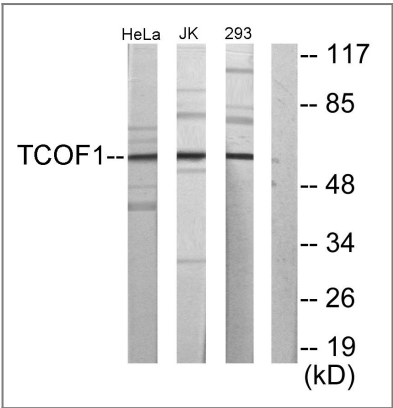
Target Information

Gene name	TCOF1		
Protein Name	Treacle protein		
	Organism	Gene ID	UniProt ID
	Human	6949 ;	Q13428 ;
	Mouse	21453 ;	O08784 ;
Cellular Localization	Nucleus, nucleolus .		
Tissue specificity	Brain,Epithelium,Eye,Skin,Testis,Thymus,		
Function	Disease:Defects in TCOF1 are the cause of Treacher Collins syndrome (TCS) [MIM:154500]. TCS is an autosomal dominant disorder of craniofacial development that occurs with an incidence of 1/50,000 live births. The clinical features of TCS are bilaterally symmetrical and include: (1) abnormalities of the external ears, atresia of the external ear canals, and malformation of the middle ear ossicles, which may result in conductive hearing loss; (2) lateral downward sloping of palpebral fissures, frequently with colobomas of the lower eyelids; (3) hypoplasia of the mandible and zygomatic complex; (4) cleft palate.,Function:May be involved in nucleolar-cytoplasmic transport. May play a fundamental role in early embryonic development, particularly in development of the craniofacial complex.,PTM:Phosphorylated upon DNA damage, probably by ATM or ATR.,similarity:Contains 1 LisH domain.,		

Validation Data



Immunohistochemistry analysis of paraffin-embedded human lung carcinoma tissue, using TCOF1 Antibody. The picture on the right is blocked with the synthesized peptide.



Western blot analysis of lysates from Jurkat, 293, HeLa cells, using TCOF1 Antibody. The lane on the right is blocked with the synthesized peptide.

| Contact information

Orders: order@immunoway.com
Support: tech@immunoway.com
Telephone: 877-594-3616 (Toll Free), 408-747-0185
Website: <http://www.immunoway.com>
Address: 2200 Ringwood Ave San Jose, CA 95131 USA



Please scan the QR code
to access additional
product information:

Treacle Rabbit pAb

For Research Use Only. Not for Use in Diagnostic Procedures.

[Antibody](#) | [ELISA Kits](#) | [Protein](#) | [Reagents](#)