

TRAIL Rabbit pAb

CatalogNo: YT4721

Key Features

Host Species

- Rabbit

Reactivity

- Human, Mouse

Applications

- WB, IHC, IF, ELISA

MW

- 30kD (Observed)

Isotype

- IgG

Recommended Dilution Ratios

WB 1:500-1:2000

IHC 1:100-1:300

IF 1:200-1:1000

ELISA 1:20000

Not yet tested in other applications.

Storage

Storage*

-15°C to -25°C/1 year (Do not lower than -25°C)

Formulation

Liquid in PBS containing 50% glycerol, 0.5% BSA and 0.02% sodium azide.

Basic Information

Clonality

Polyclonal

Immunogen Information

Immunogen

The antiserum was produced against synthesized peptide derived from human TNFSF10. AA range: 31-80

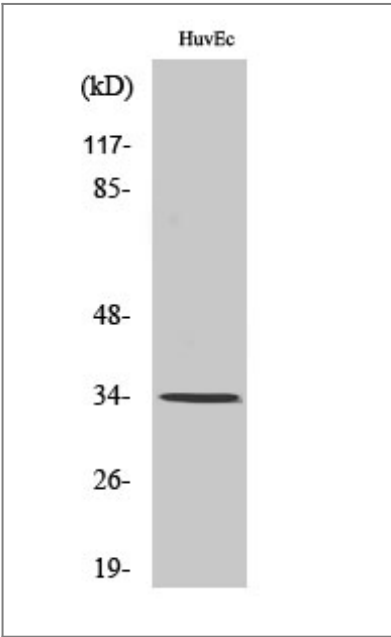
Specificity

TRAIL Polyclonal Antibody detects endogenous levels of TRAIL protein.

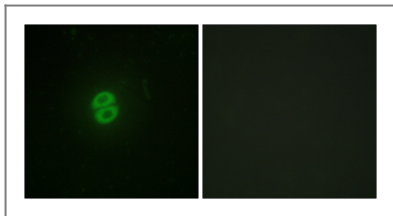
| Target Information

Gene name	TNFSF10		
Protein Name	Tumor necrosis factor ligand superfamily member 10		
	Organism	Gene ID	UniProt ID
	Human	8743 ;	P50591 ;
	Mouse		P50592 ;
Cellular Localization	Cell membrane ; Single-pass type II membrane protein . Secreted . Exists both as membrane-bound and soluble form. .		
Tissue specificity	Widespread; most predominant in spleen, lung and prostate.		
Function	cofactor: Binds 1 zinc ion per trimer., Function: Cytokine that binds to TNFRSF10A/TRAILR1, TNFRSF10B/TRAILR2, TNFRSF10C/TRAILR3, TNFRSF10D/TRAILR4 and possibly also to TNFRSF11B/OPG. Induces apoptosis. Its activity may be modulated by binding to the decoy receptors TNFRSF10C/TRAILR3, TNFRSF10D/TRAILR4 and TNFRSF11B/OPG that cannot induce apoptosis., similarity: Belongs to the tumor necrosis factor family., subunit: Homotrimer., tissue specificity: Widespread; most predominant in spleen, lung and prostate.,		

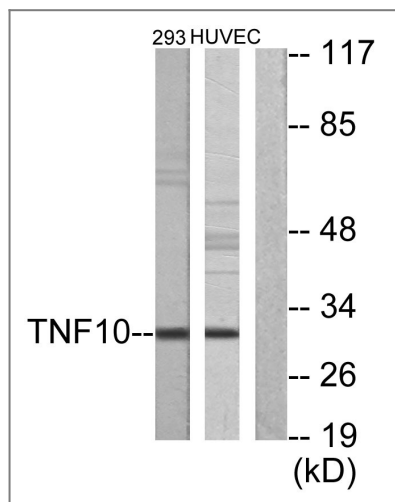
| Validation Data



Western Blot analysis of various cells using TRAIL Polyclonal Antibody. Secondary antibody(catalog#:RS0002) was diluted at 1:20000



Immunofluorescence analysis of A549 cells, using CD253 Antibody. The picture on the right is blocked with the synthesized peptide.



Western blot analysis of lysates from HUVEC cells and 293 cells, using CD253 Antibody. The lane on the right is blocked with the synthesized peptide.

Contact information

Orders: order@immunoway.com
 Support: tech@immunoway.com
 Telephone: 877-594-3616 (Toll Free), 408-747-0185
 Website: <http://www.immunoway.com>
 Address: 2200 Ringwood Ave San Jose, CA 95131 USA



Please scan the QR code to access additional product information:
TRAIL Rabbit pAb

For Research Use Only. Not for Use in Diagnostic Procedures.

[Antibody](#) | [ELISA Kits](#) | [Protein](#) | [Reagents](#)