

TRADD Rabbit pAb

CatalogNo: YT4716

Key Features

Host Species

- Rabbit

Reactivity

- Human, Mouse, Monkey

Applications

- WB, IHC, IF, ELISA

MW

- 34kD (Observed)

Isotype

- IgG

Recommended Dilution Ratios

WB 1:500-1:2000

IHC 1:100-1:300

ELISA 1:10000

IF 1:50-200

Storage

Storage*

-15°C to -25°C/1 year (Do not lower than -25°C)

Formulation

Liquid in PBS containing 50% glycerol, 0.5% BSA and 0.02% sodium azide.

Basic Information

Clonality

Polyclonal

Immunogen Information

Immunogen

The antiserum was produced against synthesized peptide derived from human TRADD. AA range: 251-300

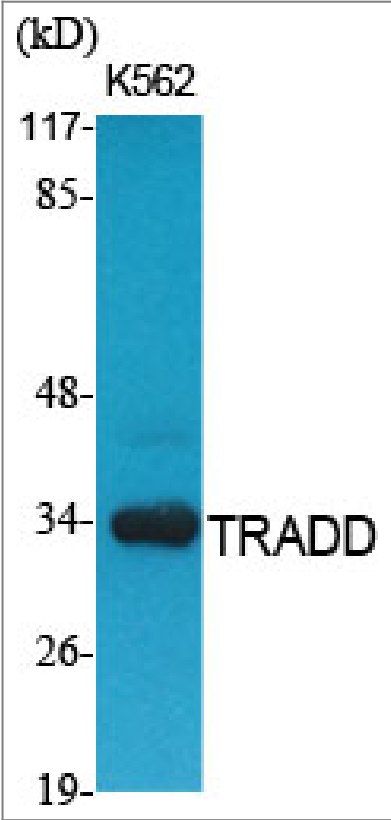
Specificity

TRADD Polyclonal Antibody detects endogenous levels of TRADD protein.

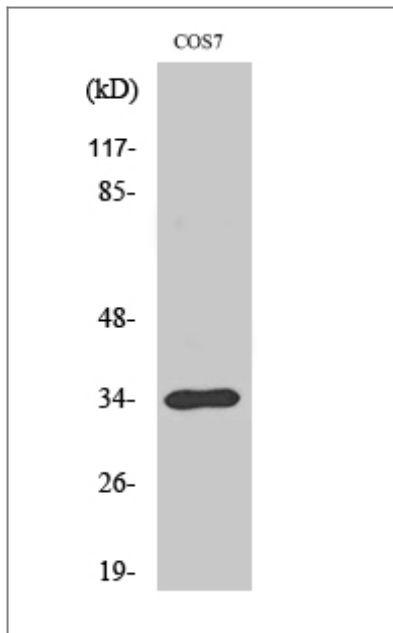
Target Information

Gene name	TRADD		
Protein Name	Tumor necrosis factor receptor type 1-associated DEATH domain protein		
	Organism	Gene ID	UniProt ID
	Human	8717;	Q15628;
	Mouse	71609;	Q3U0V2;
Cellular Localization	Nucleus . Cytoplasm . Cytoplasm, cytoskeleton . Shuttles between the cytoplasm and the nucleus. .		
Tissue specificity	Found in all examined tissues.		
Function	Domain:Requires the intact DEATH domain to associate with TNFRSF1A/TNFR1.,Function:Adapter molecule for TNFRSF1A/TNFR1 that specifically associates with the cytoplasmic domain of activated TNFRSF1A/TNFR1 mediating its interaction with FADD. Overexpression of TRADD leads to two major TNF-induced responses, apoptosis and activation of NF-kappa-B.,similarity:Contains 1 death domain.,subunit:Heterodimer with TNFRSF1A/TNFR1. Interacts with DAB2IP, FADD, HIPK2, KRT14, KRT16, KRT17, KRT18, RIPK1, SQSTM1, TRAF1, TRAF2 and TRPC4AP.,tissue specificity:Found in all examined tissues.,		

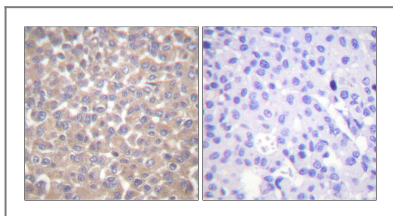
| Validation Data



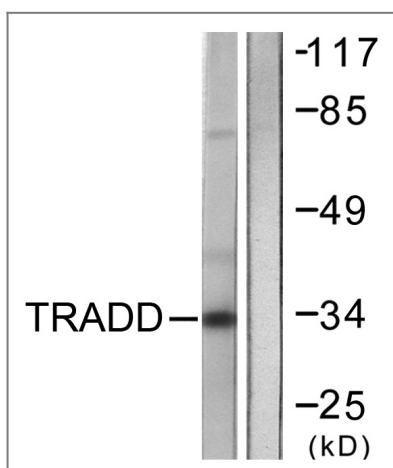
Western Blot analysis of various cells using TRADD Polyclonal Antibody. Secondary antibody(catalog#:RS0002) was diluted at 1:20000



Western Blot analysis of COS7 cells using TRADD Polyclonal Antibody. Secondary antibody(catalog#:RS0002) was diluted at 1:20000



Immunohistochemistry analysis of paraffin-embedded human breast carcinoma tissue, using TRADD Antibody. The picture on the right is blocked with the synthesized peptide.



Western blot analysis of lysates from COS7 cells, using TRADD Antibody. The lane on the right is blocked with the synthesized peptide.

Contact information

Orders: order@immunoway.com
 Support: tech@immunoway.com
 Telephone: 877-594-3616 (Toll Free), 408-747-0185
 Website: <http://www.immunoway.com>
 Address: 2200 Ringwood Ave San Jose, CA 95131 USA



Please scan the QR code to access additional product information:
TRADD Rabbit pAb