

## TP53INP2 Rabbit pAb

CatalogNo: YT4706

### Key Features

#### Host Species

- Rabbit

#### Reactivity

- Human, Mouse, Rat

#### Applications

- WB, IHC, IF, ELISA

#### MW

- 24kD (Calculated)  
17kD (Observed)

#### Isotype

- IgG

### Recommended Dilution Ratios

**WB 1:500-2000**

**IHC 1:100-1:300**

**IF 1:200-1:1000**

**ELISA 1:10000**

**Not yet tested in other applications.**

### Storage

**Storage\*** -15°C to -25°C/1 year (Do not lower than -25°C)

**Formulation** Liquid in PBS containing 50% glycerol, 0.5% BSA and 0.02% sodium azide.

### Basic Information

**Clonality** Polyclonal

### Immunogen Information

**Immunogen** The antiserum was produced against synthesized peptide derived from human TP53INP2. AA range: 1-50

**Specificity** TP53INP2 Polyclonal Antibody detects endogenous levels of TP53INP2 protein.

## | Target Information

**Gene name** TP53INP2

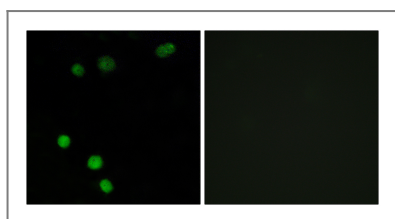
**Protein Name** Tumor protein p53-inducible nuclear protein 2

Organism	Gene ID	UniProt ID
Human	<a href="#">58476</a> ;	<a href="#">Q8IXH6</a> ;
Mouse	<a href="#">68728</a> ;	<a href="#">Q8CFU8</a> ;
Rat		<a href="#">Q8CHM3</a> ;

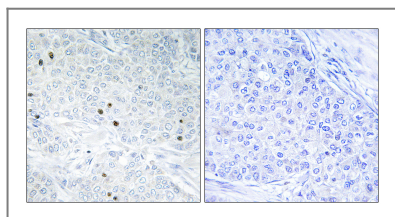
**Cellular Localization** Cytoplasm, cytosol. Nucleus. Nucleus, PML body. Cytoplasmic vesicle, autophagosome. Shuttles between the nucleus and the cytoplasm, depending on cellular stress conditions, and re-localizes to autophagosomes on autophagy activation.

**Tissue specificity** Eye,Heart,

## | Validation Data



Immunofluorescence analysis of MCF7 cells, using TP53INP2 Antibody. The picture on the right is blocked with the synthesized peptide.



Immunohistochemistry analysis of paraffin-embedded human breast carcinoma tissue, using TP53INP2 Antibody. The picture on the right is blocked with the synthesized peptide.

## | Contact information

Orders: [order@immunoway.com](mailto:order@immunoway.com)  
Support: [tech@immunoway.com](mailto:tech@immunoway.com)  
Telephone: 877-594-3616 (Toll Free), 408-747-0185  
Website: <http://www.immunoway.com>  
Address: 2200 Ringwood Ave San Jose, CA 95131 USA



Please scan the QR code to access additional product information:  
**TP53INP2 Rabbit pAb**

