

TP1 Rabbit pAb

CatalogNo: YT4704

Key Features

Host Species

- Rabbit

Reactivity

- Human,Rat,Mouse,

Applications

- IHC,IF,ELISA

MW

- 290kD (Calculated)

Isotype

- IgG

Recommended Dilution Ratios

IHC 1:100-1:300

ELISA 1:10000

IF 1:50-200

Storage

Storage*

-15°C to -25°C/1 year(Do not lower than -25°C)

Formulation

Liquid in PBS containing 50% glycerol, 0.5% BSA and 0.02% sodium azide.

Basic Information

Clonality

Polyclonal

Immunogen Information

Immunogen

The antiserum was produced against synthesized peptide derived from human TEP1. AA range:171-220

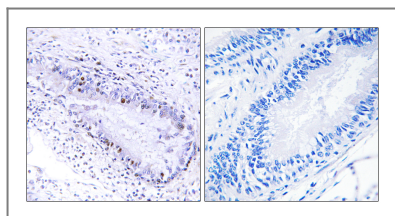
Specificity

TP1 Polyclonal Antibody detects endogenous levels of TP1 protein.

Target Information

Gene name	TEP1		
Protein Name	Telomerase protein component 1		
	Organism	Gene ID	UniProt ID
	Human	7011 ;	Q99973 ;
	Mouse		P97499 ;
Cellular Localization	Nucleus . Chromosome, telomere.		
Tissue specificity	Ubiquitous.		
Function	<p>Function:Component of the telomerase ribonucleoprotein complex that is essential for the replication of chromosome termini. Also component of the ribonucleoprotein vaults particle, a multi-subunit structure involved in nucleo-cytoplasmic transport. Responsible for the localizing and stabilizing vault RNA (vRNA) association in the vault ribonucleoprotein particle. Binds to TERC.,similarity:Contains 1 NACHT domain.,similarity:Contains 1 TROVE domain.,similarity:Contains 21 WD repeats.,similarity:Contains 4 TEP1 N-terminal repeats.,subunit:Component of the telomerase holoenzyme complex at least composed of TERT, DKC1, WDR79/TCAB1, NOP10, NHP2, GAR1, TEP1, EST1A, POT1 and a telomerase RNA template component (TERC). Component of the vault ribonucleoprotein particle, at least composed of MVP, PARP4 and one or more vault RNAs (vRNAs). Binds to VAULTRC1, VAULTRC2 and VAULTRC4/hvg4 vRNAs.,tissue specificity:Ubiquitous.,</p>		

Validation Data



Immunohistochemistry analysis of paraffin-embedded human lung carcinoma, using TEP1 Antibody. The picture on the right is blocked with the synthesized peptide.

Contact information

Orders: order@immunoway.com
 Support: tech@immunoway.com
 Telephone: 877-594-3616 (Toll Free), 408-747-0185
 Website: <http://www.immunoway.com>
 Address: 2200 Ringwood Ave San Jose, CA 95131 USA



Please scan the QR code to access additional product information:
TP1 Rabbit pAb