

## Topo III $\beta$ -1 Rabbit pAb

CatalogNo: YT4698

### Key Features

**Host Species**

- Rabbit

**Reactivity**

- Human, Mouse

**Applications**

- WB, IHC, IF, ELISA

**MW**

- 96kD (Observed)

**Isotype**

- IgG

### Recommended Dilution Ratios

**WB 1:500-1:2000****IHC 1:100-1:300****ELISA 1:20000****IF 1:50-200**

### Storage

**Storage\***

-15°C to -25°C/1 year (Do not lower than -25°C)

**Formulation**

Liquid in PBS containing 50% glycerol, 0.5% BSA and 0.02% sodium azide.

### Basic Information

**Clonality**

Polyclonal

### Immunogen Information

**Immunogen**

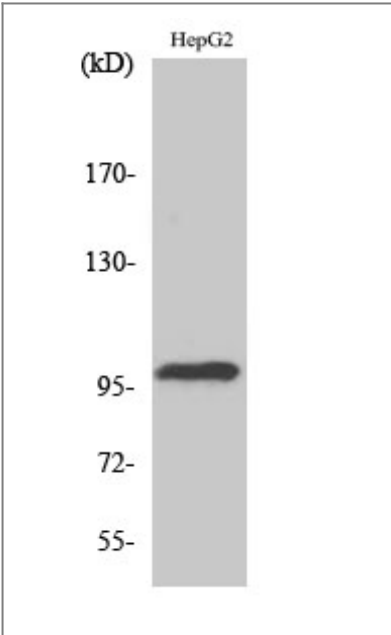
The antiserum was produced against synthesized peptide derived from human TOP3B. AA range: 51-100

**Specificity**Topo III $\beta$ -1 Polyclonal Antibody detects endogenous levels of Topo III $\beta$ -1 protein.

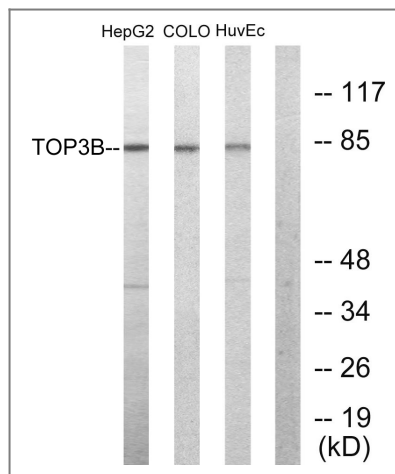
### Target Information

Gene name	TOP3B		
Protein Name	DNA topoisomerase 3-beta-1		
	Organism	Gene ID	UniProt ID
	Human	<a href="#">8940</a> ;	<a href="#">O95985</a> ;
	Mouse	<a href="#">21976</a> ;	<a href="#">Q9Z321</a> ;
Cellular Localization	condensed chromosome,nucleus,cytosol,		
Tissue specificity	Isoform 1 is found in testis, heart and skeletal muscle. A 4 kb transcript which probably represents isoform 2 is found in thymus, kidney and pancreas.		
Function	Catalytic activity:ATP-independent breakage of single-stranded DNA, followed by passage and rejoining.,Function:Possesses negatively supercoiled DNA relaxing activity.,similarity:Belongs to the prokaryotic type I/III topoisomerase family.,tissue specificity:Isoform 1 is found in testis, heart and skeletal muscle. A 4 kb transcript which probably represents isoform 2 is found in thymus, kidney and pancreas.,		

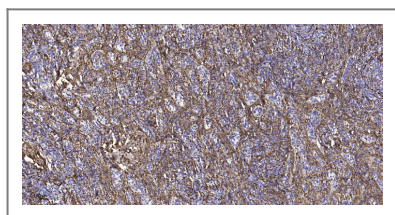
| Validation Data



Western Blot analysis of various cells using Topo IIIβ-1 Polyclonal Antibody. Secondary antibody(catalog#:RS0002) was diluted at 1:20000 cells nucleus extracted by Minute TM Cytoplasmic and Nuclear Fractionation kit (SC-003,Inventbiotech,MN,USA).



Western blot analysis of lysates from HepG2, COLO205, and HUVEC cells, using TOP3B Antibody. The lane on the right is blocked with the synthesized peptide.



Immunohistochemical analysis of paraffin-embedded human spleen tissue. 1, primary Antibody was diluted at 1:200 (4° overnight). 2, Sodium citrate pH 6.0 was used for antigen retrieval (>98°C, 20min). 3, Secondary antibody was diluted at 1:200

## Contact information

Orders: [order@immunoway.com](mailto:order@immunoway.com)  
 Support: [tech@immunoway.com](mailto:tech@immunoway.com)  
 Telephone: 877-594-3616 (Toll Free), 408-747-0185  
 Website: <http://www.immunoway.com>  
 Address: 2200 Ringwood Ave San Jose, CA 95131 USA



Please scan the QR code to access additional product information:  
**Topo IIIβ-1 Rabbit pAb**

For Research Use Only. Not for Use in Diagnostic Procedures.

[Antibody](#) | [ELISA Kits](#) | [Protein](#) | [Reagents](#)