

TNNI3K Rabbit pAb

CatalogNo: YT4692

Key Features

Host Species

- Rabbit

Reactivity

- Human, Mouse, Rat

Applications

- WB, IHC, IF, ELISA

MW

- 104kD (Calculated)

Isotype

- IgG

Recommended Dilution Ratios

WB 1:500-2000

IHC 1:100-1:300

ELISA 1:10000

IF 1:50-200

Storage

Storage*

-15°C to -25°C/1 year (Do not lower than -25°C)

Formulation

Liquid in PBS containing 50% glycerol, 0.5% BSA and 0.02% sodium azide.

Basic Information

Clonality

Polyclonal

Immunogen Information

Immunogen

The antiserum was produced against synthesized peptide derived from human TNNI3K. AA range: 301-350

Specificity

TNNI3K Polyclonal Antibody detects endogenous levels of TNNI3K protein.

Target Information

Gene name TNNI3K

Protein Name Serine/threonine-protein kinase TNNI3K

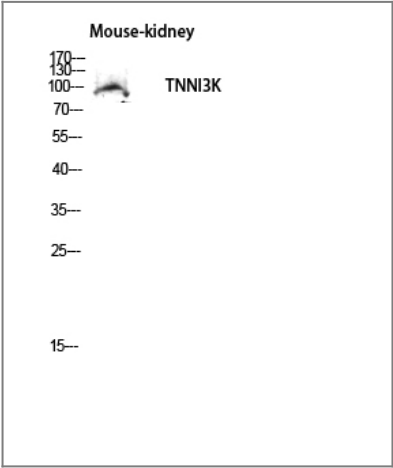
Organism	Gene ID	UniProt ID
Human	51086;	Q59H18;
Mouse	435766;	Q5GIG6;
Rat	295531;	Q7TQP6;

Cellular Localization Nucleus . Cytoplasm . Expressed at lower levels in the cytoplasm.

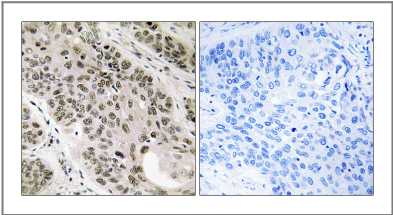
Tissue specificity Highly expressed in both adult and fetal heart.

Function Catalytic activity:ATP + a protein = ADP + a phosphoprotein.,Catalytic activity:GTP + beta-L-fucose 1-phosphate = diphosphate + GDP-L-fucose.,cofactor:Magnesium.,Function:Catalyzes the formation of GDP-L-fucose from GTP and L-fucose-1-phosphate. Functions as a salvage pathway to reutilize L-fucose arising from the turnover of glycoproteins and glycolipids.,Function:May play a role in cardiac physiology.,PTM:Autophosphorylated.,similarity:Belongs to the protein kinase superfamily. TKL Ser/Thr protein kinase family. MAP kinase kinase kinase subfamily.,similarity:Contains 1 protein kinase domain.,similarity:Contains 10 ANK repeats.,subcellular location:Expressed at lower levels in the cytoplasm.,subunit:Interacts with TNNI3, ACTC, ACTA1, MYBPC3, AIP, BABP3 and HADHB.,tissue specificity:Expressed in many tissues.,tissue specificity:Highly expressed in both adult and fetal heart.,

Validation Data



Western blot analysis of Mouse-kidney lysis using TNNI3K antibody. Antibody was diluted at 1:500. Secondary antibody(catalog#:RS0002) was diluted at 1:20000



Immunohistochemistry analysis of paraffin-embedded human lung carcinoma tissue, using TNNI3K Antibody. The picture on the right is blocked with the synthesized peptide.

| Contact information

Orders: order@immunoway.com
Support: tech@immunoway.com
Telephone: 877-594-3616 (Toll Free), 408-747-0185
Website: <http://www.immunoway.com>
Address: 2200 Ringwood Ave San Jose, CA 95131 USA



Please scan the QR code
to access additional
product information:
TNNI3K Rabbit pAb

For Research Use Only. Not for Use in Diagnostic Procedures.

[Antibody](#) | [ELISA Kits](#) | [Protein](#) | [Reagents](#)