

# TNF- $\beta$ Rabbit pAb

CatalogNo: YT4691

## Key Features

### Host Species

- Rabbit

### Reactivity

- Human, Mouse, Rat, Monkey

### Applications

- WB, ELISA

### MW

- 22kD (Observed)

### Isotype

- IgG

## Storage

**Storage\*** -15°C to -25°C/1 year (Do not lower than -25°C)

**Formulation** Liquid in PBS containing 50% glycerol, 0.5% BSA and 0.02% sodium azide.

## Recommended Dilution Ratios

**WB 1:500-1:2000**

**ELISA 1:40000**

**Not yet tested in other applications.**

## Basic Information

**Clonality** Polyclonal

## Immunogen Information

**Immunogen** The antiserum was produced against synthesized peptide derived from human TNF-beta. AA range:17-66

**Specificity** TNF- $\beta$  Polyclonal Antibody detects endogenous levels of TNF- $\beta$  protein.

## Target Information

**Gene name** LTA

**Protein Name** Lymphotoxin-alpha

Organism	Gene ID	UniProt ID
Human	<a href="#">4049;</a>	<a href="#">P01374;</a>
Mouse	<a href="#">16992;</a>	<a href="#">P09225;</a>
Rat	<a href="#">25008;</a>	<a href="#">Q06332;</a>

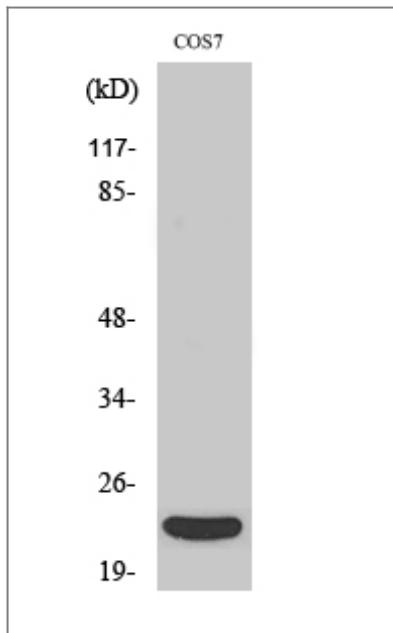
**Cellular Localization** Secreted. Membrane. The homotrimer is secreted. The heterotrimer is membrane-associated.

**Tissue specificity** Lymph,Peripheral blood leukocyte,Peripheral blood mononuclear cells,Peripheral blood mononu

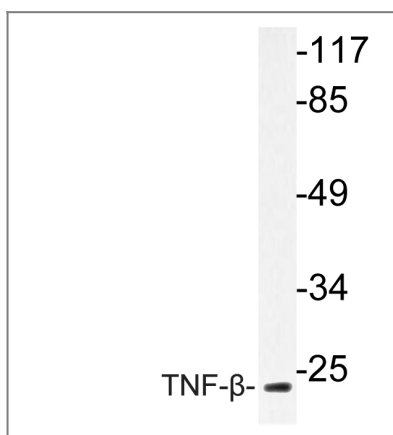
**Function** Disease:Genetic variations in LTA are associated with susceptibility to leprosy type 4 (LPRS4) [MIM:610988]; also known as susceptibility to age-dependent leprosy. Leprosy is a chronic infectious disease of peripheral sensory nerves caused by Mycobacterium leprae.,Disease:Genetic variations in LTA are associated with susceptibility to psoriatic arthritis [MIM:607507]. Psoriasis is a chronic inflammatory dermatosis that affects approximately 2% of the population. It is characterized by red, scaly skin lesions that are usually found on the scalp, elbows, and knees, and may be associated with severe arthritis. Psoriatic arthritis has been defined as an inflammatory arthritis usually without any rheumatoid factor in serum (seronegative arthritis) associated with psoriasis.,Function:Cytokine that in its homotrimeric form binds to TNFRSF1A/TNFR1, TNFRSF1B/TNFR2 and TNFRSF14/HVEM. In its heterotrimeric form with LTB binds to TNFRSF3/LTBR. Lymphotoxin is produced by lymphocytes and cytotoxic for a wide range of tumor cells in vitro and in vivo.,online information:Lymphotoxin entry,online information:The Singapore human mutation and polymorphism database,similarity:Belongs to the tumor necrosis factor family.,subcellular location:The homotrimer is secreted. The heterotrimer is membrane-associated.,subunit:Homotrimer, and heterotrimer of either two LTB and one LTA subunits or (less prevalent) two LTA and one LTB subunits.,

---

## | Validation Data



Western Blot analysis of various cells using TNF- $\beta$  Polyclonal Antibody diluted at 1:1000. Secondary antibody(catalog#:RS0002) was diluted at 1:20000



Western blot analysis of lysate from COS-7cell, using TNF- $\beta$  antibodies.

## Contact information

Orders: [order@immunoway.com](mailto:order@immunoway.com)  
 Support: [tech@immunoway.com](mailto:tech@immunoway.com)  
 Telephone: 877-594-3616 (Toll Free), 408-747-0185  
 Website: <http://www.immunoway.com>  
 Address: 2200 Ringwood Ave San Jose, CA 95131 USA



Please scan the QR code to access additional product information:  
**TNF- $\beta$  Rabbit pAb**

For Research Use Only. Not for Use in Diagnostic Procedures.

[Antibody](#) | [ELISA Kits](#) | [Protein](#) | [Reagents](#)