

TIF1α Rabbit pAb

CatalogNo: YT4654

| Key Features

Host Species

- Rabbit

Reactivity

- Human, Mouse

Applications

- WB, IHC, IF, ELISA

MW

- 117kD (Observed)

Isotype

- IgG

| Recommended Dilution Ratios

WB 1:500-1:2000

IHC 1:100-1:300

ELISA 1:20000

IF 1:50-200

| Storage

Storage*

-15°C to -25°C/1 year (Do not lower than -25°C)

Formulation

Liquid in PBS containing 50% glycerol, 0.5% BSA and 0.02% sodium azide.

| Basic Information

Clonality

Polyclonal

| Immunogen Information

Immunogen

The antiserum was produced against synthesized peptide derived from human TRIM24. AA range:1001-1050

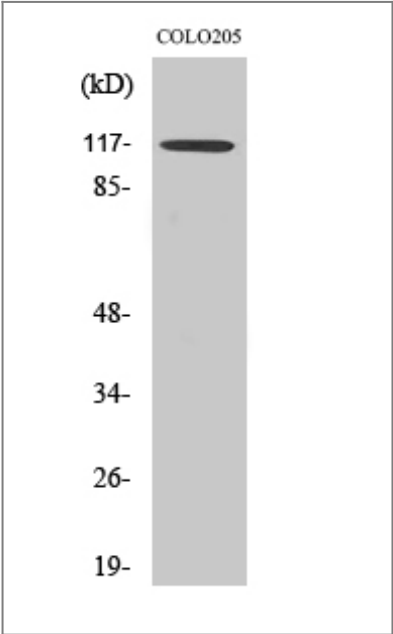
Specificity

TIF1α Polyclonal Antibody detects endogenous levels of TIF1α protein.

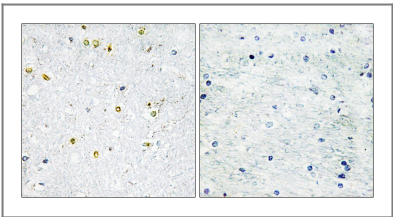
| Target Information

Gene name	TRIM24		
Protein Name	Transcription intermediary factor 1-alpha		
	Organism	Gene ID	UniProt ID
	Human	8805 ;	O15164 ;
	Mouse	21848 ;	Q64127 ;
Cellular Localization	Nucleus . Cytoplasm . Mitochondrion . Colocalizes with sites of active transcription. Detected both in nucleus and cytoplasm in some breast cancer samples. Predominantly nuclear. Translocated from nucleus to mitochondria to mediate antiviral immunity (PubMed:32324863). .		
Tissue specificity	Brain,Epithelium,Mammary cancer,Testis,Thyroid,		
Function	Disease:A chromosomal aberration involving TIF1 is a cause of thyroid papillary carcinoma (PACT) [MIM:188550]. Translocation t(7;10)(q32;q11) with RET. The translocation generates the TIF1/RET (PTC6) oncogene.,Function:Interacts selectively in vitro with the AF2-activating domain of the estrogen receptors. Association with DNA-bound estrogen receptors requires the presence of estradiol.,PTM:Phosphorylated upon DNA damage, probably by ATM or ATR.,similarity:Contains 1 bromo domain.,similarity:Contains 1 PHD-type zinc finger.,similarity:Contains 1 RING-type zinc finger.,similarity:Contains 2 B box-type zinc fingers.,subunit:Interacts with CBX1 and CBX3 (By similarity). Interacts with NR3C2.,		

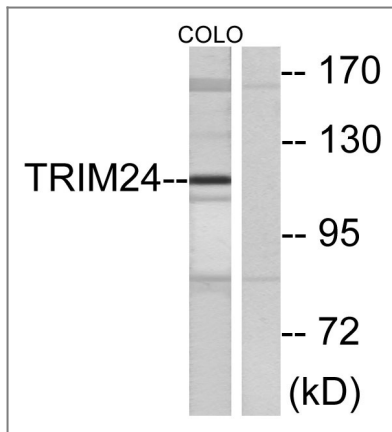
Validation Data



Western Blot analysis of COLO205 cells using TIF1α Polyclonal Antibody diluted at 1:1000. Secondary antibody(catalog#:RS0002) was diluted at 1:20000



Immunohistochemistry analysis of paraffin-embedded human brain tissue, using TRIM24 Antibody. The picture on the right is blocked with the synthesized peptide.



Western blot analysis of lysates from COLO cells, using TRIM24 Antibody. The lane on the right is blocked with the synthesized peptide.

Contact information

Orders: order@immunoway.com
 Support: tech@immunoway.com
 Telephone: 877-594-3616 (Toll Free), 408-747-0185
 Website: <http://www.immunoway.com>
 Address: 2200 Ringwood Ave San Jose, CA 95131 USA



Please scan the QR code to access additional product information:
TIF1 α Rabbit pAb

For Research Use Only. Not for Use in Diagnostic Procedures.

[Antibody](#) | [ELISA Kits](#) | [Protein](#) | [Reagents](#)