

TIEG-1/2 Rabbit pAb

CatalogNo: YT4652

Key Features

Host Species

- Rabbit

Reactivity

- Human, Mouse, Rat

Applications

- IHC, IF, ELISA

MW

- 53kD (Calculated)

Isotype

- IgG

Recommended Dilution Ratios

IHC 1:100-1:300**ELISA 1:5000****IF 1:50-200**

Storage

Storage*

-15°C to -25°C/1 year(Do not lower than -25°C)

Formulation

Liquid in PBS containing 50% glycerol, 0.5% BSA and 0.02% sodium azide.

Basic Information

Clonality

Polyclonal

Immunogen Information

Immunogen

The antiserum was produced against synthesized peptide derived from human KLF10/11. AA range:391-440

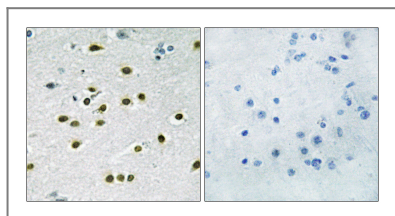
Specificity

TIEG-1/2 Polyclonal Antibody detects endogenous levels of TIEG-1/2 protein.

Target Information

Gene name	KLF10/11		
Protein Name	Krueppel-like factor 10/11		
	Organism	Gene ID	UniProt ID
	Human	7071 ; 8462 ;	Q13118 ; O14901 ;
	Mouse	21847 ; 194655 ;	
	Rat	81813 ;	O08876 ;
Cellular Localization	Nucleus .		
Tissue specificity	Epithelium, Eye, Placenta,		
Function	Function: Transcriptional repressor involved in the regulation of cell growth. Inhibits cell growth. Binds to the consensus sequence 5'-GGTGTG-3'. Induction: By TGF-beta. PTM: Ubiquitinated; mediated by SIAH1 and leading to its subsequent proteasomal degradation. Similarity: Belongs to the Sp1 C2H2-type zinc-finger protein family. Similarity: Contains 3 C2H2-type zinc fingers.		

Validation Data



Immunohistochemistry analysis of paraffin-embedded human brain tissue, using KLF10/11 Antibody. The picture on the right is blocked with the synthesized peptide.

Contact information

Orders: order@immunoway.com
 Support: tech@immunoway.com
 Telephone: 877-594-3616 (Toll Free), 408-747-0185
 Website: <http://www.immunoway.com>
 Address: 2200 Ringwood Ave San Jose, CA 95131 USA



Please scan the QR code to access additional product information:
TIEG-1/2 Rabbit pAb