

# Thrombin Receptor Rabbit pAb

CatalogNo: YT4645

Orthogonal Validated 

## Key Features

### Host Species

- Rabbit

### Reactivity

- Human, Mouse, Rat

### Applications

- WB, IHC, IF, ELISA

### MW

- 48kD (Observed)

### Isotype

- IgG

## Recommended Dilution Ratios

WB 1:500-1:2000

ELISA 1:5000

IF 1:50-200

## Storage

### Storage\*

-15°C to -25°C/1 year (Do not lower than -25°C)

### Formulation

Liquid in PBS containing 50% glycerol, 0.5% BSA and 0.02% sodium azide.

## Basic Information

### Clonality

Polyclonal

## Immunogen Information

### Immunogen

The antiserum was produced against synthesized peptide derived from human Thrombin Receptor. AA range: 10-59

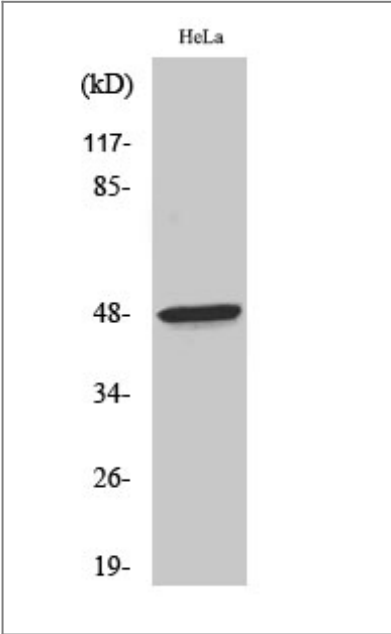
### Specificity

Thrombin R Polyclonal Antibody detects endogenous levels of Thrombin R protein.

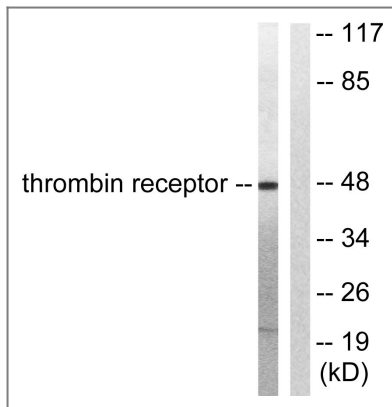
## Target Information

Gene name	F2R		
Protein Name	Proteinase-activated receptor 1		
	Organism	Gene ID	UniProt ID
	Human	<a href="#">2149;</a>	<a href="#">P25116;</a>
	Mouse	<a href="#">14062;</a>	<a href="#">P30558;</a>
	Rat		<a href="#">P26824;</a>
Cellular Localization	Cell membrane; Multi-pass membrane protein.		
Tissue specificity	Platelets and vascular endothelial cells.		
Function	Function:High affinity receptor for activated thrombin coupled to G proteins that stimulate phosphoinositide hydrolysis. May play a role in platelets activation and in vascular development.,PTM:A proteolytic cleavage generates a new N-terminus that functions as a tethered ligand.,PTM:Phosphorylated; probably mediating desensitization prior to the uncoupling and internalization of the receptor.,similarity:Belongs to the G-protein coupled receptor 1 family.,tissue specificity:Platelets and vascular endothelial cells.,		

| Validation Data



Western Blot analysis of various cells using Thrombin R Polyclonal Antibody



Western blot analysis of lysates from HeLa cells, treated with Nocodazole 1ug/ml 18h, using Thrombin Receptor Antibody. The lane on the right is blocked with the synthesized peptide.

## Contact information

Orders: [order@immunoway.com](mailto:order@immunoway.com)  
 Support: [tech@immunoway.com](mailto:tech@immunoway.com)  
 Telephone: 877-594-3616 (Toll Free), 408-747-0185  
 Website: <http://www.immunoway.com>  
 Address: 2200 Ringwood Ave San Jose, CA 95131 USA



Please scan the QR code to access additional product information:  
**Thrombin Receptor Rabbit pAb**

For Research Use Only. Not for Use in Diagnostic Procedures.

[Antibody](#) | [ELISA Kits](#) | [Protein](#) | [Reagents](#)