

## THP Rabbit pAb

CatalogNo: YT4644

### Key Features

**Host Species**

- Rabbit

**Reactivity**

- Human, Mouse, Rat

**Applications**

- WB, ELISA, IHC

**MW**

- 70kD (Observed)

**Isotype**

- IgG

### Recommended Dilution Ratios

**WB 1:500-2000****IHC 1:50-300****ELISA 1:2000-20000**

### Storage

**Storage\*** -15°C to -25°C/1 year (Do not lower than -25°C)**Formulation** Liquid in PBS containing 50% glycerol, 0.5% BSA and 0.02% sodium azide.

### Basic Information

**Clonality** Polyclonal

### Immunogen Information

**Immunogen** The antiserum was produced against synthesized peptide derived from human THP. AA range:329-378**Specificity** THP Polyclonal Antibody detects endogenous levels of THP protein.

### Target Information

**Gene name** UMOD

**Protein Name** Uromodulin

Organism	Gene ID	UniProt ID
Human	<a href="#">7369</a> ;	<a href="#">P07911</a> ;
Mouse		<a href="#">Q91X17</a> ;
Rat		<a href="#">P27590</a> ;

**Cellular Localization**

Apical cell membrane ; Lipid-anchor, GPI-anchor . Basolateral cell membrane ; Lipid-anchor, GPI-anchor . Cell projection, cilium membrane . Only a small fraction sorts to the basolateral pole of tubular epithelial cells compared to apical localization (PubMed:22776760). Secreted into urine after cleavage (PubMed:18375198, PubMed:26811476). Colocalizes with NPHP1 and KIF3A (PubMed:20172860). .; [Uromodulin, secreted form]: Secreted . Detected in urine. .

**Tissue specificity**

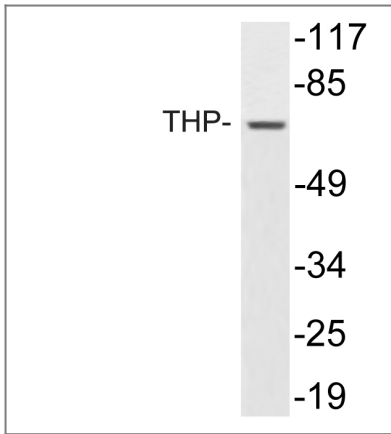
Expressed in the tubular cells of the kidney. Most abundant protein in normal urine (at protein level). Synthesized exclusively in the kidney. Expressed exclusively by epithelial cells of the thick ascending limb of Henle's loop (TALH) and of distal convoluted tubule lumen.

**Function**

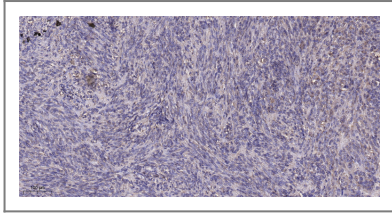
Disease:Defects in UMOD are a cause of glomerulocystic kidney disease with hyperuricemia and isosthenuria [MIM:609886]. Glomerulocystic kidney disease (GCKD) and medullary cystic disease/familial juvenile hyperuricemic nephropathy (MCKD/HNFJ) are two distinct renal disorders that share some common clinical features. The former is characterized by a cystic dilatation of Bowman's space and a collapse of glomerular tuft. Familial GCKD can be associated with either hypoplastic or normal sized kidneys. A GCKD clinical variant presents the association with hyperuricemia due to low fractional excretion of uric acid and severe impairment of urine concentrating ability that are reminiscent of MCKD/HNFJ.,Disease:Defects in UMOD are the cause of familial juvenile hyperuricemic nephropathy (HNFJ) [MIM:162000]. HNFJ is a heritable autosomal dominant renal disease characterized by juvenil onset of hyperuricaemia, polyuria, progressive renal failure, and gout. The disease is associated with interstitial pathological changes resulting in fibrosis.,Disease:Defects in UMOD are the cause of medullary cystic kidney disease 2 (MCKD2) [MIM:603860]. MCKD2 and HNFJ constitute a group of heritable renal diseases with a common mode of transmission (autosomal dominant) and shared features including polyuria, hyperuricaemia, progressive renal failure, and gout. Both diseases are associated with interstitial pathological changes resulting in fibrosis. While corticomedullary cysts are well documented in MCKD2, their presence in HNFJ is not well documented. The primary clinical features of MCKD2 and HNFJ vary in presence and severity, complicating the diagnosis of these conditions, particularly in milder cases. Both diseases are considered to be allelic diseases.,Function:Not known. May play a role in regulating the circulating activity of cytokines as it binds to IL-1, IL-2 and TNF with high affinity.,similarity:Contains 1 ZP domain.,similarity:Contains 3 EGF-like domains.,subcellular location:Secreted after cleavage in the urine.,tissue specificity:Synthesized by the kidneys and is the most abundant protein in normal human urine.,

---

## Validation Data



Western blot analysis of lysate from K562 cells, using THP antibody.



Immunohistochemical analysis of paraffin-embedded human Colon cancer. 1, Antibody was diluted at 1:200(4° overnight). 2, Tris-EDTA,pH9.0 was used for antigen retrieval. 3,Secondary antibody was diluted at 1:200(room temperature, 45min).

## Contact information

Orders: [order@immunoway.com](mailto:order@immunoway.com)  
Support: [tech@immunoway.com](mailto:tech@immunoway.com)  
Telephone: 877-594-3616 (Toll Free), 408-747-0185  
Website: <http://www.immunoway.com>  
Address: 2200 Ringwood Ave San Jose, CA 95131 USA



Please scan the QR code to access additional product information:  
**THP Rabbit pAb**

For Research Use Only. Not for Use in Diagnostic Procedures.

[Antibody](#) | [ELISA Kits](#) | [Protein](#) | [Reagents](#)