

## MASTL Rabbit pAb

CatalogNo: YT4642

### Key Features

#### Host Species

- Rabbit

#### Reactivity

- Human, Mouse

#### Applications

- WB, IHC, IF, ELISA

#### MW

- 97kD (Observed)

#### Isotype

- IgG

### Recommended Dilution Ratios

**WB 1:500-1:2000**

**IHC 1:100-1:300**

**ELISA 1:20000**

**IF 1:50-200**

### Storage

#### Storage\*

-15°C to -25°C/1 year (Do not lower than -25°C)

#### Formulation

Liquid in PBS containing 50% glycerol, 0.5% BSA and 0.02% sodium azide.

### Basic Information

#### Clonality

Polyclonal

### Immunogen Information

#### Immunogen

The antiserum was produced against synthesized peptide derived from human MASTL. AA range: 821-870

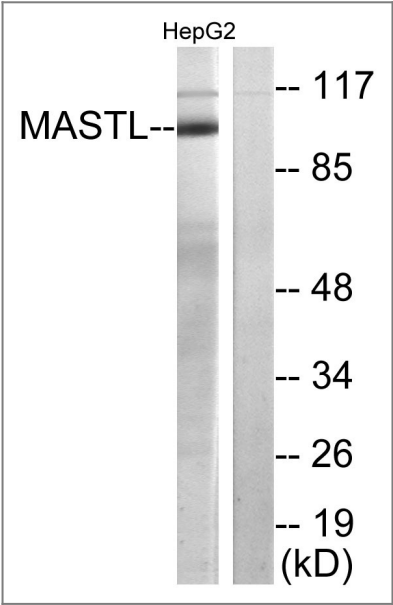
#### Specificity

THC2 Polyclonal Antibody detects endogenous levels of THC2 protein.

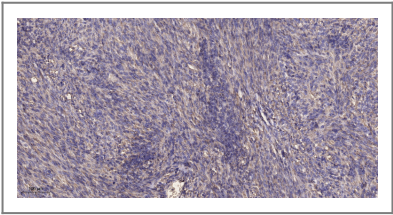
### Target Information

Gene name	MASTL		
Protein Name	Serine/threonine-protein kinase greatwall		
	Organism	Gene ID	UniProt ID
	Human	<a href="#">84930</a> ;	<a href="#">Q96GX5</a> ;
	Mouse	<a href="#">67121</a> ;	<a href="#">Q8C0P0</a> ;
Cellular Localization	Cytoplasm, cytoskeleton, microtubule organizing center, centrosome . Nucleus . Cleavage furrow . During interphase is mainly nuclear, upon nuclear envelope breakdown localizes at the cytoplasm and during mitosis at the centrosomes. Upon mitotic exit moves to the cleavage furrow. .		
Tissue specificity	Epithelium,Placenta,		
Function	Catalytic activity:ATP + a protein = ADP + a phosphoprotein.,Disease:Defects in MASTL are the cause of thrombocytopenia type 2 (THC2) [MIM:188000]. Thrombocytopenia is defined by a decrease in the number of platelets in circulating blood, resulting in the potential for increased bleeding and decreased ability for clotting.,Function:Putative serine/threonine kinase which may be involved in megakaryocyte differentiation.,similarity:Belongs to the protein kinase superfamily. AGC Ser/Thr protein kinase family.,similarity:Contains 1 AGC-kinase C-terminal domain.,similarity:Contains 1 protein kinase domain.,		

Validation Data



Western blot analysis of lysates from HepG2 cells, using MASTL Antibody. The lane on the right is blocked with the synthesized peptide.



Immunohistochemical analysis of paraffin-embedded human Colon cancer. 1, Antibody was diluted at 1:200(4° overnight). 2, Tris-EDTA,pH9.0 was used for antigen retrieval. 3,Secondary antibody was diluted at 1:200(room temperature, 45min).

## | Contact information

Orders: order@immunoway.com  
Support: tech@immunoway.com  
Telephone: 877-594-3616 (Toll Free), 408-747-0185  
Website: <http://www.immunoway.com>  
Address: 2200 Ringwood Ave San Jose, CA 95131 USA



Please scan the QR code  
to access additional  
product information:  
**MASTL Rabbit pAb**

---

For Research Use Only. Not for Use in Diagnostic Procedures.

[Antibody](#) | [ELISA Kits](#) | [Protein](#) | [Reagents](#)