

TGIF Rabbit pAb

CatalogNo: YT4635

Key Features

Host Species

- Rabbit

Reactivity

- Human, Mouse, Rat

Applications

- WB, ELISA

MW

- 43kD (Observed)

Isotype

- IgG

Recommended Dilution Ratios

WB 1:500-1:2000

ELISA 1:10000

Not yet tested in other applications.

Storage

Storage* -15°C to -25°C/1 year (Do not lower than -25°C)

Formulation Liquid in PBS containing 50% glycerol, 0.5% BSA and 0.02% sodium azide.

Basic Information

Clonality Polyclonal

Immunogen Information

Immunogen Synthesized peptide derived from the C-terminal region of human TGIF.

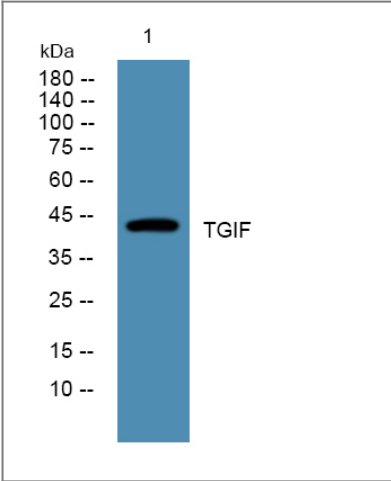
Specificity TGIF Polyclonal Antibody detects endogenous levels of TGIF protein.

Target Information

Gene name TGIF1

Protein Name	Homeobox protein TGIF1		
	Organism	Gene ID	UniProt ID
	Human	7050;	Q15583;
	Mouse	21815;	P70284;
Cellular Localization	Nucleus.		
Tissue specificity	Brain,Liver,Placenta,		
Function	Disease:Defects in TGIF1 are the cause of holoprosencephaly type 4 (HPE4) [MIM:142946]. Holoprosencephaly (HPE) [MIM:236100] is the most common structural anomaly of the brain, in which the developing forebrain fails to correctly separate into right and left hemispheres. Holoprosencephaly is genetically heterogeneous and associated with several distinct facies and phenotypic variability.,Function:Binds to a retinoid X receptor (RXR) responsive element from the cellular retinol-binding protein II promoter (CRBP-II-RXRE). Inhibits the 9-cis-retinoic acid-dependent RXR alpha transcription activation of the retinoic acid responsive element. Active transcriptional corepressor of SMAD2. Links the nodal signaling pathway to the bifurcation of the forebrain and the establishment of ventral midline structures. May participate in the transmission of nuclear signals during development and in the adult, as illustrated by the down-modulation of the RXR alpha activities.,similarity:Belongs to the TALE/TGIF homeobox family.,similarity:Contains 1 homeobox DNA-binding domain.,subunit:Interacts with CTBP, SMAD2, SMAD3 and HDAC1.,		

Validation Data



Western blot analysis of lysates from KB cells, primary antibody was diluted at 1:1000, 4°over night

Contact information

Orders: order@immunoway.com
Support: tech@immunoway.com
Telephone: 877-594-3616 (Toll Free), 408-747-0185
Website: <http://www.immunoway.com>
Address: 2200 Ringwood Ave San Jose, CA 95131 USA



Please scan the QR code
to access additional
product information:
TGIF Rabbit pAb

For Research Use Only. Not for Use in Diagnostic Procedures.

[Antibody](#) | [ELISA Kits](#) | [Protein](#) | [Reagents](#)