

TEL Rabbit pAb

CatalogNo: YT4599

| Key Features

Host Species

- Rabbit

Reactivity

- Human, Mouse, Rat

Applications

- WB, IHC, IF, ELISA

MW

- 53kD (Observed)

Isotype

- IgG

| Recommended Dilution Ratios

WB 1:500-1:2000

IHC 1:100-1:300

IF 1:200-1:1000

ELISA 1:5000

Not yet tested in other applications.

| Storage

Storage*

-15°C to -25°C/1 year (Do not lower than -25°C)

Formulation

Liquid in PBS containing 50% glycerol, 0.5% BSA and 0.02% sodium azide.

| Basic Information

Clonality

Polyclonal

| Immunogen Information

Immunogen

The antiserum was produced against synthesized peptide derived from human ETV6. AA range: 371-420

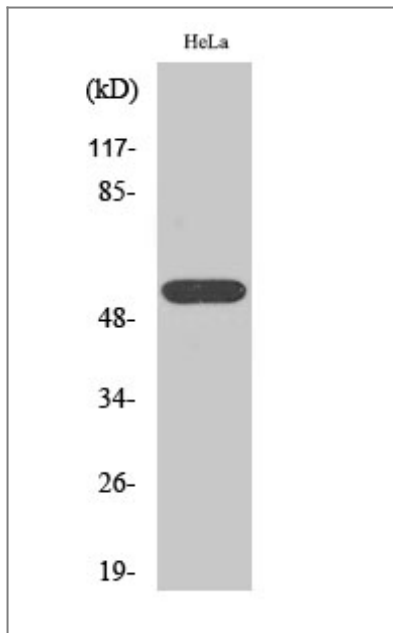
Specificity

TEL Polyclonal Antibody detects endogenous levels of TEL protein.

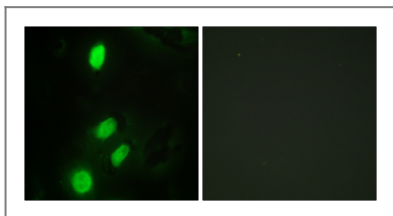
| Target Information

Gene name	ETV6		
Protein Name	Transcription factor ETV6		
	Organism	Gene ID	UniProt ID
	Human	2120 ;	P41212 ;
	Mouse	14011 ;	P97360 ;
Cellular Localization	Nucleus.		
Tissue specificity	Ubiquitous.		
Function	<p>Disease:A chromosomal aberration involving ETV6 is a cause in many instances of chronic myeloproliferative disorder with eosinophilia (MPE) [MIM:131440]. Translocation t(5;12) with PDGFRB on chromosome 5 creating an ETV6-PDGFRB fusion protein.,Disease:A chromosomal aberration involving ETV6 is a cause of acute lymphoblastic leukemia. Translocation t(9;12)(p13;p13) with PAX5.,Disease:A chromosomal aberration involving ETV6 is a cause of myelodysplastic syndrome (MDS). Translocation t(1;12)(p36.1;p13) with MDS2.,Disease:A chromosomal aberration involving ETV6 is found in a form of chronic myelomonocytic leukemia (CMML). Translocation t(5;12)(q33;p13) with PDGFRB. It is characterized by abnormal clonal myeloid proliferation and by progression to acute myelogenous leukemia (AML).,Disease:A chromosomal aberration involving ETV6 is found in a form of pre-B acute myeloid leukemia. Translocation t(9;12)(p24;p13) with JAK2.,Disease:A chromosomal aberration involving ETV6 may be a cause of acute eosinophilic leukemia (AEL). Translocation t(5;12)(q31;p13) with ACSL6.,Disease:A chromosomal aberration involving ETV6 may be a cause of myelodysplastic syndrome (MDS) with basophilia. Translocation t(5;12)(q31;p13) with ACSL6.,Disease:Chromosomal aberrations involving ETV6 are found in a form of acute myeloid leukemia (AML). Translocation t(12;22)(p13;q11) with MN1; translocation t(4;12)(q12;p13) with CHIC2.,Disease:Chromosomal aberrations involving ETV6 are found in childhood acute lymphoblastic leukemia (ALL). Translocations t(12;21)(p12;q22) and t(12;21)(p13;q22) with RUNX1/AML1.,Disease:Defects in ETV6 are a cause of acute myelogenous leukemia (AML) [MIM:601626]. AML is a malignant disease in which hematopoietic precursors are arrested in an early stage of development.,Function:Transcriptional repressor; binds to the DNA sequence 5'-CCGGAAGT-3'. ,PTM:Phosphorylated.,PTM:Phosphorylation of Ser-257 by MAPK14 (p38) inhibits ETV6 transcriptional repression.,similarity:Belongs to the ETS family.,similarity:Contains 1 ETS DNA-binding domain.,similarity:Contains 1 PNT (pointed) domain.,subunit:Can form homodimers or heterodimers with TEL2 or FLI1. Interacts with L3MBTL and HDAC9.,tissue specificity:Ubiquitous.,</p>		

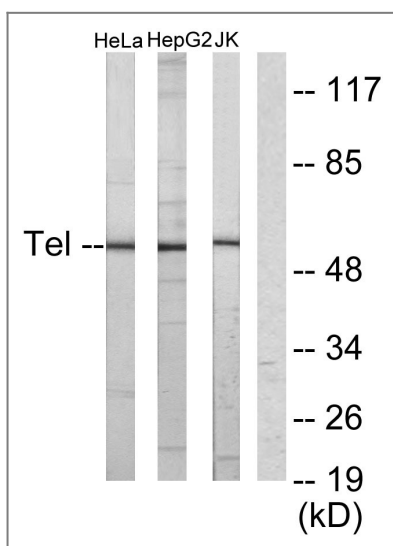
| Validation Data



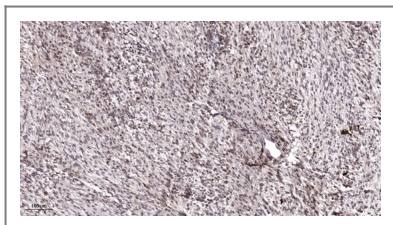
Western Blot analysis of various cells using TEL Polyclonal Antibody



Immunofluorescence analysis of HeLa cells, using ETV6 Antibody. The picture on the right is blocked with the synthesized peptide.



Western blot analysis of lysates from HeLa, HepG2, and Jurkat cells, using ETV6 Antibody. The lane on the right is blocked with the synthesized peptide.



Immunohistochemical analysis of paraffin-embedded human Colon cancer. 1, Antibody was diluted at 1:200(4° overnight). 2, Tris-EDTA,pH9.0 was used for antigen retrieval. 3,Secondary antibody was diluted at 1:200(room temperature, 45min).

Contact information

Orders: order@immunoway.com
Support: tech@immunoway.com
Telephone: 877-594-3616 (Toll Free), 408-747-0185
Website: <http://www.immunoway.com>
Address: 2200 Ringwood Ave San Jose, CA 95131 USA



Please scan the QR code
to access additional
product information:
TEL Rabbit pAb

For Research Use Only. Not for Use in Diagnostic Procedures.

[Antibody](#) | [ELISA Kits](#) | [Protein](#) | [Reagents](#)