

## TEF Rabbit pAb

CatalogNo: YT4595

### | Key Features

#### Host Species

- Rabbit

#### Reactivity

- Human, Mouse, Rat

#### Applications

- WB, IHC, IF, ELISA

#### MW

- 45-55kD (Observed)

#### Isotype

- IgG

### | Recommended Dilution Ratios

**WB 1:500-1:2000**

**IHC 1:100-1:300**

**ELISA 1:10000**

**IF 1:50-200**

### | Storage

#### Storage\*

-15°C to -25°C/1 year (Do not lower than -25°C)

#### Formulation

Liquid in PBS containing 50% glycerol, 0.5% BSA and 0.02% sodium azide.

### | Basic Information

#### Clonality

Polyclonal

### | Immunogen Information

#### Immunogen

The antiserum was produced against synthesized peptide derived from human TEF. AA range: 211-260

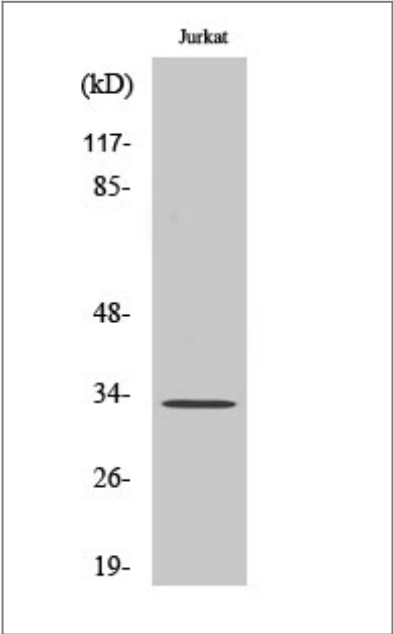
#### Specificity

TEF Polyclonal Antibody detects endogenous levels of TEF protein.

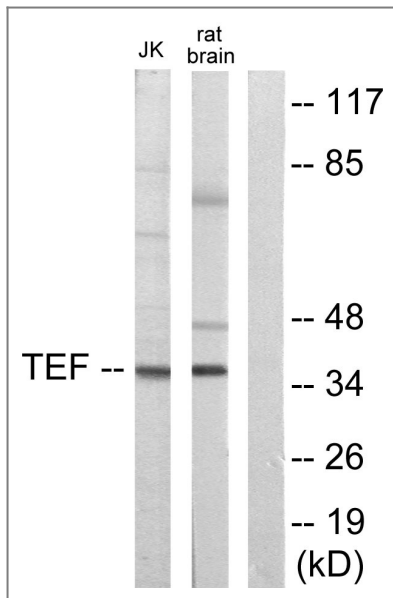
### | Target Information

Gene name	TEF		
Protein Name	Thyrotroph embryonic factor		
	Organism	Gene ID	UniProt ID
	Human	<a href="#">7008;</a>	<a href="#">Q10587;</a>
	Mouse	<a href="#">21685;</a>	<a href="#">Q9JLC6;</a>
	Rat	<a href="#">29362;</a>	<a href="#">P41224;</a>
Cellular Localization	Nucleus.		
Tissue specificity	Brain,Kidney,Retina,		
Function	Function:Transcription factor that binds to and transactivates the TSHB promoter. Binds to a minimal DNA-binding sequence 5'-[TC][AG][AG]TTA[TC][AG]-3'.,induction:Accumulates according to a robust circadian rhythm.,similarity:Belongs to the bZIP family.,similarity:Belongs to the bZIP family. PAR subfamily.,similarity:Contains 1 bZIP domain.,subunit:Binds DNA as a homodimer or a heterodimer. Can form a heterodimer with DBP.,		

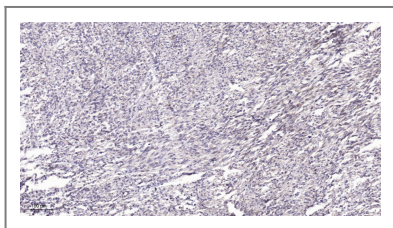
| Validation Data



Western Blot analysis of various cells using TEF Polyclonal Antibody cells nucleus extracted by Minute TM Cytoplasmic and Nuclear Fractionation kit (SC-003,Inventbiotech,MN,USA).



Western blot analysis of lysates from Jurkat and rat brain cells, using TEF Antibody. The lane on the right is blocked with the synthesized peptide.



Immunohistochemical analysis of paraffin-embedded human Small intestinal stromal tumor. 1, Tris-EDTA, pH 9.0 was used for antigen retrieval. 2 Antibody was diluted at 1:200 (4° overnight). 3, Secondary antibody was diluted at 1:200 (room temperature, 45 min).

## Contact information

Orders: [order@immunoway.com](mailto:order@immunoway.com)  
 Support: [tech@immunoway.com](mailto:tech@immunoway.com)  
 Telephone: 877-594-3616 (Toll Free), 408-747-0185  
 Website: <http://www.immunoway.com>  
 Address: 2200 Ringwood Ave San Jose, CA 95131 USA



Please scan the QR code to access additional product information:  
**TEF Rabbit pAb**

For Research Use Only. Not for Use in Diagnostic Procedures.

[Antibody](#) | [ELISA Kits](#) | [Protein](#) | [Reagents](#)